



PINTS OF VIEW

The CAMRA Magazine for Edinburgh and South-East Scotland

It really IS better down the pub!



Read inside - about the nine pubs featured above (page 16)
 Discover a winter walk + real ale (page 5)
 Find out about the latest brewery developments (page 17)
 Rediscover the pub signs of Edinburgh (page 21)
 A CAMRA view on supporting pub tenants in Scotland (page 24)
 CAMRA branch news (page 3)
 and much more....

WHAT? PUB

whatpub.com Thousands of pubs at your fingertips!

Over 90% of Britain's real ale pubs featured

Subscriptions available for thousands of CAMRA members

Available for CAMRA who produce the UK's best beer & pub guide

Pints of View is the magazine of the Edinburgh & South East Scotland Branch of the Campaign for Real Ale.

Web: www.edinburghcamra.org.uk

Facebook: [edinburghcamra](https://www.facebook.com/edinburghcamra)

Twitter: [@CAMRA_Edinburgh](https://twitter.com/CAMRA_Edinburgh)

Editor

Roger Preece

28 Namur Road

Penicuik

Midlothian

EH26 0LL

poveditor@edinburghcamra.org.uk

Advertising Manager

Charles Johnston

17a Clarendon Crescent

Edinburgh EH4 1PU

advertising@edinburghcamra.org.uk

Branch membership secretary

Mike Just

memsec@edinburghcamra.org.uk

Branch secretary

Jim Darroch

secretary@edinburghcamra.org.uk

Views expressed in Pints of View are not necessarily those of Edinburgh & South East Scotland branch of CAMRA, the editor or the publishers. While every effort is made to ensure the accuracy of the information contained in Pints of View, no responsibility can be accepted for any errors or omissions.

Pints of View accepts advertising on condition that their inclusion does not necessarily imply an endorsement or approval of content. The editor reserves the right to edit contributions sent for publication. All marks and copyright acknowledged.

Trading Standards Officers

Borders

St Dunstons, High Street, Melrose, TD6 9RU

01896 823924

East Lothian

Council Offices, Court Street, Haddington

01620 827365

West Lothian

Almondvale Boulevard, Livingston

01506 776410

Edinburgh

Chesser House, 500 Gorgie Road, Edinburgh

0131 529 3030

Midlothian

8 Lothian Road, Dalkeith, Midlothian

0131 270 7500

Circulation - 20,000 throughout Edinburgh, Lothian & the Borders

Editorial

Welcome to the Winter 2014 edition of Pints of View (POV). Many of you will be reading these pages before the Christmas and Hogmanay festivities. We send our best wishes to all our readers for the New Year.

Our front page highlights one of CAMRA's main campaigning efforts at this time - the importance of the pub to our lives and communities. In POV we highlight this Campaign with a feature covering a number of pubs, inns and hotels. Unlike the Good Beer Guide there has been no formal process of selection. These are pubs that we have been told are doing a good job - by our readers!

So these establishments are representative of what constitutes a good pub, but of course they are far from being the only ones. Elsewhere in these pages you will find out how to let us know about the pub you know that is doing a great job, and of course selling good quality real ale.

One more thing - photographs of pubs appearing on the front page are part of the branch collection that has been uploaded to the CAMRA online pub guide **WhatPub** - WhatPub details on the front page.

Solid News

There is a lot of information within the pages of POV regarding pubs and breweries. We make no apologies for this. There is simply a lot of news! Whether it be new breweries starting up, changes in ownership of pubs, new pubs or pub closures, we have a variety of sources put together by our small but very dedicated editorial team.

One noticeable fact is that, in comparison with the rest of the trade, there are relatively few closures amongst real ale pubs. This is a general trend, noted throughout the UK by CAMRA and others. As this is the season of goodwill we hope this trend will long continue.

The Avenue Restaurant With Rooms At the Victoria Inn



**Best Bistro Meal
East Lothian**

Food & Drink Awards 2013

We're in CAMRA's Good Beer Guide

Two regularly changing real ales plus
fine wines

Open daily for lunches and dinners

Five well appointed en-suite bedrooms

9 Court Street, Haddington

East Lothian, EH41 3JD

01620 823 332

www.theavenuerestaurant.co.uk

bookings@theavenuerestaurant.co.uk



CAMRA CALLING - what our CAMRA branch is doing



Branch activities

Our branch activities are publicised on our branch web site and Facebook page. All CAMRA members are also able to look us up in the Diary section of the CAMRA monthly magazine **What's Brewing**.

CAMRA's anniversaries

The 40 year celebrations kicked off in September of this year with a gathering at **Callum's**, Johnstone, the closest surviving pub to where it all got started in Scotland. Our branch was a slightly later developer, but only by a few months. As mentioned elsewhere in this magazine, the pub where the branch started, the **Black Swan**, is still alive and well - although now going by another name, the **Roseleaf**, under completely different ownership, and with a very different, but equally welcoming, ambiance. An informal gathering is expected on the anniversary evening in mid January 2015, with a more formal event at the end of the same month at the Caledonian Brewery.

Other meetings

Just after this issue of Pints of View makes its appearance, the branch Christmas Social will take place on Saturday 13

December at the **Ancrum Cross Keys**, an inn featured elsewhere in this edition.

2 Pubs socials

These informal socials are held on Tuesday evenings, usually in and around the City of Edinburgh. All the meetings start at 7:30 PM. The December meeting is on December 9, starting at **Ushers**, West Nicholson Street, and then moving on to the **Dagda Bar**, Buccleuch Street. Starting a New Year of meetings, the January 2015 get together on Tuesday 13 January is at **Deacon Brodie's**, Lawnmarket and then the **Bow Bar**, Victoria Street, the latter to be confirmed. The February meeting will begin on Tuesday 10 February at the **Regent**, Montrose Terrace, and then the **Mash Tun**, Easter Road. The March 2 Pubs on March 10 will start at **Burlington Bertie's**, Tarvit St, and then on to **Cloisters**, Brougham St.

(Note: Diary - www.edinburghcamra.org.uk)



Members' reminder - GBG 2016 selection meeting will be at the Beehive, Grassmarket, on Saturday 21 February, 2 PM. All members must bring cards.

March Branch Meeting

14 March at 3 PM. **Nether Abbey Hotel**, North Berwick.

POV late news - Green King takeover of Spirit Inns has been agreed to by the latter, but depends on the approval of both sets of shareholders. The offer is worth £773.6m. Spirit brands include Taylor and Walker, Chef & Brewer, Flaming Grill and the Original Pub Company. Spirit demerged from Punch Taverns in 2011. The rival bidders, C&C Group - owners of Magners Cider - were given until 20 November by the Takeover Panel to make a formal approach or walk away.



STEWART
— BREWING —

@StewartBrewing  @CraftBeerKitch



**CRAFT
BEER
KITCHEN**








where you brew the beer

Growler Filling Station

Premium fresh beer straight from the tank. Take your beer away in a 1 or 2 litre refillable growler. Try before you buy and first fill free.

Brewery Tours

Every Thursday and Friday at 7.00pm. Tours cost £15 per person. Prices include: drinks, snacks, beer sampling, a complimentary glass and an extensive tour.

www.stewartbrewing.co.uk

Choose your recipe, brew your beer whilst sampling some others!

Prices include top notch tuition, personalised labels, finest brewing ingredients and an unforgettable Craft Beer Kitchen experience.

Return in two weeks to take your beer away and toast your success.

www.craftbeerkitchen.co.uk



BELHAVEN
BREWERY

SAME GREAT ALES, BOLD NEW LOOK



Walking the Water of Leith - 1

There is a long tradition amongst CAMRA members for serious walking and real ale drinking. Our own branch has always done very well in this regard, and this article by branch member Ron Elder is a good example of what members do. It is an extract of a much longer walk that Ron has completed from Currie to Leith. Remember - these walks are not pub crawls, simply describing the easiest route from pub A to pub B. An essential part of the activity is be aware of and learn about the surroundings, and also, of course, build up a good thirst. This section of the whole walk starts near Stockbridge. Appropriate gear should be worn. You will need a good map! - Ed.

From Falshaw Bridge to Newhaven Road

Falshaw Bridge marks the start of a pleasant, quiet, section of this walk. Don't cross the bridge, but turn left, cross the road, then turn right into Arboretum Avenue. (A short-cut exists from the Stockbridge pubs, and can be found by using Haugh Street or St Bernard's Row to regain the path – but that would be cheating!). Continue along Arboretum Avenue on the left bank for a short distance until the gate into Rocheid Path is reached. Enter the path, and note the Colony housing terraces on the right, one of several Colony housing developments in the city, and built in the 19th century for artisan tenants. They are now much sought after for purchase as they offer comfortable, affordable housing, reasonably close to the city. These terraces are now enjoying the benefit of the new expensive flood defence measures, which have been provided at various locations on the river as it makes its way through the city. This length of the Walkway is pleasantly wooded, with much ivy, holly, and the occasional grey squirrel in evidence. Ignore the new footbridge connecting the path to the Glenogle Swim Centre, and continue on the left bank, crossing to the right side at the next bridge. Ascend the flight of steps which lead to Brandon Terrace. This area of the city is known as Canonmills, and is named after the Augustinian canons of Holyrood Abbey who owned the local corn mills.



Canonmills has good bus services to the city centre (routes 8,23 & 27), and has several real ale pubs. The nearest to the Walkway is the **Orchard** on Howard Place, at its junction with Warriston Crescent, which has up to three real ales on offer. To reach this pub, cross the road bridge and walk a few yards to the north up Inverleith Row. Alternatively, a short walk south east along Huntly Street and Canon Street will arrive at the multiple real ale **Smithie's Ale House** in Eyre Place. A few yards walk to the north east along Eyre Place reaches the **Cross & Corner** and the **Other Place**, both of which serve up to three real ales.

Return to the Canonmills junction, and cross the road to enter Warriston Road which runs along the right bank. A short walk along Warriston Road reveals yet another former railway bridge, whose attractive stone arches once carried the trains from Canal Street station (now Waverley) to the waiting train ferry boats at Granton harbour on the Forth estuary. This was the first train carrying ferry in the

world, and it continued in service until the completion of the Forth Bridge in 1890 made it redundant.

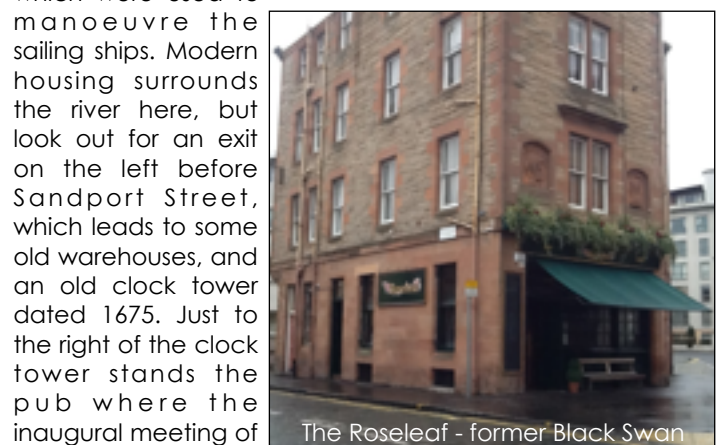
Continue along the top of the new flood defences, then cross to the left bank by St Mark's Bridge, and immediately turn right into St Mark's Park. Follow the path on the left bank through the park, then drop down to pass through a small tunnel below a railway line which is still in use. After passing through the tunnel, an old works chimney can be seen on the left, and a large weir – the last on the river - whose lade fed the mills of Bonnington. An attractive wooded section now leads to a gentle rise from the river in order for the Walkway to join the trackbed of the former North British railway branch to Citadel station, originally known as Leith North station, and opened in 1846 as the first railway station in Leith. In 200 yards, the platforms of the old Newhaven Road station can be seen. At the end of the platforms, and just before Newhaven Road bridge, ascend the former station access steps on the left to reach Newhaven Road. No real ale near here, but a good bus service to the city, route number 11.

From Newhaven Road to Leith Docks

From the top of the steps, cross Newhaven Road, turn right, then after 50 yards turn left to enter a new path on the left, which is just before the road bridge over the river. Descend the ramp and cross to the right bank by the new footbridge. Continue for a short distance with a tall wall on the right, then recross to the left bank by another new bridge. Although not unpleasant, this section of the Walkway is surrounded by industrial buildings on both sides, the largest of which has been converted for use as offices and flats. At Anderson Place bridge, the Walkway leaves the river for a short stretch. Head north from the bridge for 70 yards, then turn right into West Bowling Green Street. After walking on West Bowling Green Street for 100 yards, carefully look for the partially concealed entrance to a path on the left, which leads down to the river left bank once more.

This section of the Walkway to Junction Bridge is attractively urban, with modern housing on the right bank, and a high wall and trees on the left. At Junction Bridge note the art deco former cinema, known as the 'State', which was built by James Miller in 1938, and now enjoys 'B' listing by Historic Scotland.

After passing below Junction Bridge, the historic Port of Leith is entered, which was tidal at this point until the completion of the dock locks in 1969, thereby impounding the river and creating a floating harbour. Note the quayside large mooring rings for the ships, along with the winches which were used to manoeuvre the sailing ships. Modern housing surrounds the river here, but look out for an exit on the left before Sandport Street, which leads to some old warehouses, and an old clock tower dated 1675. Just to the right of the clock tower stands the pub where the inaugural meeting of the Edinburgh Branch of CAMRA was held in 1975. At that time, the pub was known as the **Black Swan** – look for the swan relief above the pub entrance door, now a red swan since the black grime was cleaned from the red sandstone façade!



The Roseleaf - former Black Swan

Branch of CAMRA was held in 1975. At that time, the pub was known as the **Black Swan** – look for the swan relief above the pub entrance door, now a red swan since the black grime was cleaned from the red sandstone façade!

Walking the Water of Leith - 2

The pub is now named the **Roseleaf**, and has two real ales available.

As would be expected in an old port, there are many pubs in this area, most of which serve real ales. The most popular with local real ale drinkers are the **Malt & Hops** at 45 Shore, the pub serving up to eight real ales, the **King's Wark** at 36 Shore, an ancient pub serving three real ales, and **Henry Hall's Carriers Quarters** around the corner at 42 Bernard Street, also selling two real ales.

Cross busy Commercial Street near to the bridge, which also opened to shipping, and continue on Shore, observing the large old yacht and sad little floating offices, and just think how things could have been with some



forethought from the City Council – this harbour could have been busy with colourful leisure vessels from the near continent, Scandinavia, and from other parts of the UK – a great opportunity lost!

Beyond Shore, the last swing bridge on the river, built in 1874 as the Victoria Swing Bridge, is reached. This marks the end of the river, and the entrance to the modern Leith Docks. From this point, good views of the oil industry supply & research vessels and the entrance locks from the Forth estuary can be had. Cross the Victoria Swing Bridge to reach the left bank for the last time, and

now head upstream for the first time on this walk, following the path around the edge of the river until a derelict lock and old swing bridge is reached. This is Rennie's Lock, which impounded the waters of the East and West Old Docks so creating a floating harbour, and now sadly in-filled – again, just think how this could have been developed for leisure boating in a similar manner to that achieved in places such as London, Bristol, Cardiff and Liverpool – have we no imagination in Edinburgh?

Crossing the Rennie's Lock swing bridge gives access to **Teuchters Landing**, the final pub of the walk, and what a great place to finish! A regular entry in CAMRA's Good Beer Guide, this pub serves five of, arguably, the best quality real ales to be had in Edinburgh and Leith, and is a worthy highlight for the end of the walk. The pub was created from the former passenger waiting room for customers awaiting the departure of the ferries from Leith to Aberdeen, Kirkwall, and Lerwick – a service only lost in the past 50 years. Interesting food is available in the pub all day, and can be served in unusual small or large mugs. Whatever pubs are missed on this walk, don't miss this one! After leaving Teuchters Landing, head south along Dock Place to reach its junction with the busy Commercial Street where a turn left will find the bus stop. Regular routes 16, 22, 35 & 36 serve the city centre. But, before boarding the bus, have a look at the imposing Leith Custom House, located beside the bus stop. It was built in 1810-1812 in the Neoclassical Greek Doric style by Robert Reid.

Ron Elder

(Ed: Ron Elder, CAMRA member since 1997, describes his walking status as a 'Munro Compleatest!')

Brewed by hand in Edinburgh

Bitter Winter
"...a quart of ale is a dish for a king"
EXTRA SPECIAL BITTER
for the Season

KNEE DEEP
SPICED ALE
for Christmas

GREAT SCOT
PURE MALT ALE
for a' that

OVER THE BAR
Try, then convert
for the rugby

CALEDONIANBEER.COM

drinkaware.co.uk
for the facts

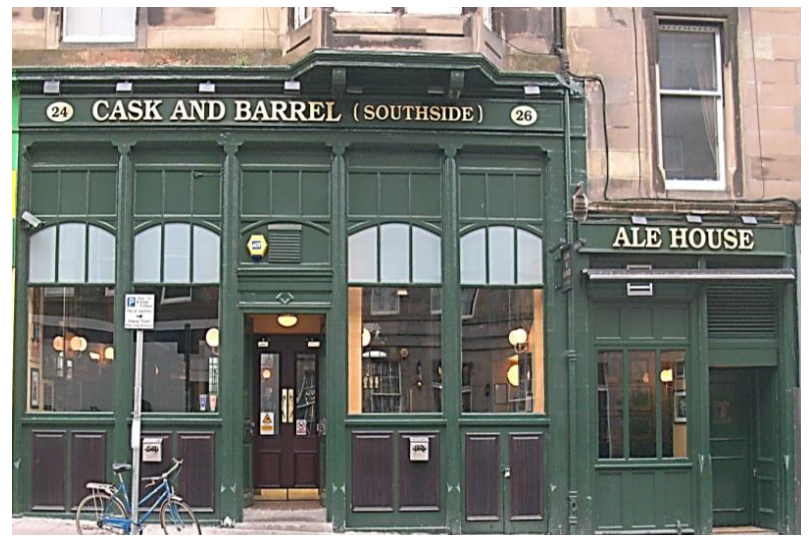
CALEDONIAN BREWERY

Cask and Barrel (Southside)

24-26 West Preston Street, Edinburgh EH8 9PZ

0131 667 0856 – casksouthside@btconnect.com

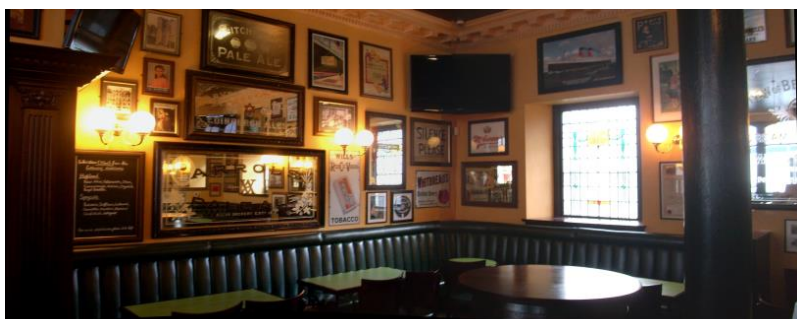
Opening in 2010 the 'Cask Southside' came third in Camra's City of Edinburgh Pub of the Year awards 2011. Since then this young bar has gone from strength to strength, coming first in 2012 and 2013. Showing remarkable consistency they have now been awarded runner up in 2014. An outstanding set of achievements!



Besides the regular ales; Highland's Orkney Best, Stewart's 80/- and Deuchar's IPA, numerous guest ales have been enjoyed by a growing clientele. Guest ales have been sourced from breweries countrywide, from Cornwall to Orkney and all points in between.



Matt and the management team would firstly like to thank the staff for all their hard work over the past year; secondly, Camra's branch members for their continuing recognition. Finally, a special thanks to all our customers, regular or otherwise, without whom none of this would be possible. Cheers!!



@caskandbarrelss



Cask and Barrel South Side

Open: Mon – Thurs 12 noon to 12 midnight, Fri 12 noon to 1am, Sat 11am to 1am, Sun 12:30pm to 12 midnight



Usher's of Edinburgh

20 Cask & Craft Beers on Rotation
New Beer Matching Menu
Express Lunch Menu – Just £5

Usher's Of Edinburgh – 32 West Nicolson St – EH8 9DD
0131 662 1757 – www.ushersofedinburgh.co.uk

CITY ALE TALES - 1

Readers of the 2015 CAMRA Good Beer Guide will know that the 'Edinburgh' section is now split geographically. In the interests of consistency we'll try to follow the same format in this review, starting with **Central Edinburgh** and the **Crafter's Barn** in Bank St (at the top of the Mound). This smart food-and-Belgian-beer bar has been selling cask ale from Eden Brewery, and is expected to continue doing so, but frustratingly it was not pouring on our recent visit. Next door the **Whiski Rooms** won 'Best Old Town Restaurant' in the inaugural *I-on* magazine awards and also sells decent Deuchars IPA. Up in the Royal Mile the **Royal McGregor**



Royal McGregor

often has an Orkney beer as guest and promotes 3 x one-third pint tasters. The **Castle Arms** is also worth a visit for its changing selection of three guest ales. Down Victoria St the very lively **Finnegan's Wake** is apparently selling real ale, whilst the **Bow Bar** has continued to put on imaginative beer festivals and events (including another one with German and German-styled beer in October). In the Grassmarket James and Ruth retired this year from the **Last Drop** after a remarkable 29 years, so changes may be afoot for this (previously) rather maverick member of the Nicholson's chain.

The area has also been earmarked for one of the four new Wetherspoon's pubs that are in the planning stage (this one in the old Khushi's restaurant site). The others are on Southside, in Lothian Rd and on Waverley Bridge – all have been well described and discussed by Richard Taylor in his Beercast blog, and by many others, so we'll not add to the debate at this stage! Another pub company with plans for the city is Fuller Thomson, who have been reported as 'closing in' on a new-build central Edinburgh site for their sixth bar (and fourth in the capital), to open in 2015. Where will it be, though?

We head back north via the CAMRA-friendly **Malt Shovel** in Cockburn St and **Jake's Place**, where cask ale has been re-established, to the **Guildford Arms**. As well as their 'brewer's weekends' they put on an enjoyable 11-day Autumn Beer Festival with beers from Tyne Bank, Cotleigh, Cromarty, Great Heck and many others. Along in Rose St the **Rose and Crown** now has three Isle of Skye beers as regulars on the handpumps (Black, Red and Gold). The basement **Amber Rose** pub finally reopened in July after a very lengthy closure following a fire in the block above. It's been very smartly refurbished and sells five cask ales, albeit rather expensively. Finally, the **Jekyll and Hyde** in Hanover St has lived up to its name, with fleeting appearances of a Cairngorm real ale on its single handpump.

In **East Edinburgh** there's big news from Northfield Broadway (close to the Meadowbank real ale desert), where the **Scottie** now has two real ales and may increase this number if sales go well. Caledonian beers have been featured amongst others. Out in Portobello the **Three Monkeys** has closed. Up the road in Joppa, the **Ormelie Tavern** (a great locals' pub with four ales and a beautiful gantry) is one of Edinburgh's most easterly real ale pubs, along with the **Dalriada**, which continues to provide an imposing presence right next to the promenade and beach. There are usually three ales on handpump, with the

Alechemy Rhapsody a standout when we called in recently. There are also live music evenings and regular 'meet the brewer'/beer tasting evenings. The Dalriada has great views across to North Berwick Law and the soon-to-be-demolished Cockenzie power station, but be sure to check the winter opening times carefully on WhatPub!

Back in town, the upper part of Easter Road has only one real ale pub, the **Mash Tun**. Here you will find two or three real ales and a real cider such as Old Rosie. Loch Lomond Galaxy Hop Trial was on top form on our last visit. Tap takeovers happen regularly, with the October one (Stewart) also featuring the launch of the Mash Tun's own beer, a delicious salted caramel stout. Lunch deals are on offer Mon-Fri and you'll usually get good beer chat from the staff too. Just up the road **Cornelius Beer & Wine**, with its exceptional bottled beer range, was celebrating its 10th anniversary in November and they too were producing a special (11.2%!) beer to celebrate. At the Leith Links end of Easter Road the **Persevere** continues its role as a fine community pub dispensing real ale.



The Persevere

Arguably also in the east of Edinburgh lies the **Holyrood 9A**, a perpetually busy beer-lovers paradise. Manager Caroline Mair won the BII Scotland 'Bar Personality of the Year' award earlier in 2014. Congratulations!

There's plenty to report from **North Edinburgh** (and Leith), starting with the minor name change at the **Windsor**, the appendage 'Buffet' having been dropped along with the green exterior. Down Leith Walk the former Volunteer Arms, which must have been one of the smokiest pubs in Edinburgh before the ban, has now been transformed by the I@G Group into the **Cask and Still**, with reportedly up to six real ales on offer. Mark Brown and his staff at Wetherspoon's **Foot of the Walk** were proud to have won a gold Best Bar None award earlier in 2014, while just down Duke St the **Lioness of Leith**, with its Barney's real ale, won an I-on award 'best bar' gong (along with the **Blackbird** and **Hamilton's** elsewhere). In Henderson St the **Flying Dog** sadly had to give up real ale due to poor sales, but has some decent imported bottled beers and is a fun place. The **Roseleaf** in the up-to-the-minute part of Leith celebrated its seventh birthday in July and is likely to feature in one of CAMRA Edinburgh & S. E. Scotland's 40th birthday bashes in January 2015! Across the water **Henry Hall's Carrier's Quarters** (the oldest pub in Leith) is now part of the Shilling group although the company has put the **Cross and Corner** in Canonmills up for sale (despite them winning Shilling's inter-pub 'brew-off' at **Thomson's Bar** earlier in the year!).

The **Bonnington** at Bonnington Toll now has a new tenant – Cormac Lovett, previously at the **Espy** in Portobello. He's planning to move the handpumps nearer to the front door for greater visibility before re-introducing real ale. Across in Stockbridge the **Scran and Scallie** continues to win numerous awards, including 'Pub/Bar of the Year' (both South East and Overall) at the inaugural Food Awards Scotland in September. Three top-quality ales, usually from Highland and Isle of Skye, can be found on tap. The **Stockbridge Tap** (Branch Edinburgh Pub of the Year 2014)

CITY ALE TALES - 2

keeps on serving great beer and putting on imaginative beer festivals; its September event offered a number of unfinned cask beers, and very good they were too.

The **Phoenix** on Broughton St stayed open on the evening of the Referendum, being licensed until 3am and serving coffee and rolls thereafter. If you're there why not cross the road to visit the also CAMRA-friendly **Barony Bar** and **Cask and Barrel**? Between them you could expect to find up to 15 cask ales on show. **Clouds and Soil** opened in Picardy Place earlier in 2014, but had persistent problems with its beer lines, leaving its two handpumps depressingly barren. This sister bar to **Bond No 9** in Leith was installing new lines in September, which will hopefully have sorted the cask ale issues out. The former New Town Bar in Dublin St has been converted into the Hanging Bat's new venture **Spit/Fire**, which was due to open in November after we went to press. Owner Chris Mair said that it's unlikely to be selling cask ale because of unsuitable cellar conditions which would prevent him offering a quality product. Further away from the centre the two keg-only Sam Smith's pubs, the **Cramond Inn** and the **Doocot**, closed in mysterious circumstances; the former then reopened amidst complaints from customers about alleged large price increases imposed by the brewery.

In the South you'll find only one real ale pub on the west pavement of the main road all the way from Princes St to the excellent **Southern** in South Clerk St – the



The Greenmantle

Greenmantle. When we called in the other weekend, refreshingly crisp Harviestoun Schiehallion was one of the three ales on tap, together with Old Rosie cider. The Harviestoun theme continues around the gantry, where there's a massive

collection of the brewery's pump clips. With meal deals (Mon-Fri), poker nights and TV sport the Greenmantle is aimed squarely at the large local student population and does it pretty well too. Nearby **Usher's of Edinburgh** opened as a would-be brewpub in July beneath the **Pear Tree** and has up to five real ales on handpump as well as a large selection of craft keg beers. (See elsewhere in POV for their brewery news!) Up the road in Lothian St the former Bristo Bar and Kitchen has been totally transformed into **Paradise Palms**, selling Deuchars IPA and a guest beer. Also near the university the former Meadow Bar, which had been closed recently, has finally reopened as the **Moo Bar** (its previous nickname). The student theme continues at the **Library Bar**, Teviot Row (EUSA) which is open to the public all year and reportedly selling real ale.

Moving further south **Lomond's** (formerly the Steamie) has closed down, having never sold real ale in its short life, whilst **Drouthy Neebors** now has a second handpump selling a house ale at £2.04 per pint! The **Sitting Room** in Craiglockhart has also been closed and is believed to have been sold. For details of the **Charwood** (ex-Pavilion) in Fairmilehead and **Stable Bar** at nearby Mortonhall see the 'Boundary Commission' article in this POV. Back in Morningside the **Buckstone Pub and Kitchen** has been accentuating its real ale offering and also put on a beer

festival in the summer. In Morningside itself the **Waiting Room** is now dog-friendly and **Growler Beers UK** recently celebrated their first birthday, carry-out real ales being a big seller for them.

Before our final geographical round-up we'll report on a short excursion from the **Scotch Hop** in Causewayside south towards Ratcliffe Terrace, as promised in the last issue. This in fact took the form of a beer census, where we logged all of the ales sold in the various pubs to look at quantity and diversity (also noting quality). The total number of pubs surveyed was six, of which four sold real ale. In all, thirteen different cask ales were on offer, giving a 'diversity' of 3.25 per real ale pub, quite a high number. The average beer quality score was 3.6 (out of 5) and the best beers were Allendale Mosaic at **Leslie's Bar** (John Leslie), Caledonian Trojan Horse India Dark Ale at the **Scotch Hop** and Cairngorm Trade Winds at **No 1 Grange Rd**. The other

pub, the **Old Bell**, had the best interior décor, banter and characters! In England, CAMRA branches in some cities, e.g. Sheffield and Nottingham, have organised one-day full-city beer censuses to see how many different real ale are sold at any



The Old Bell

given time (usually to end up claiming that their location has the most!). Would it be possible to organise this in Edinburgh? The results might be interesting.....

So to **West Edinburgh** (including the West End). In Morrison St the I@G Group have also been actively changing the former Spider's Web into the **Jolly Botanist** (so named for an intended emphasis on gin, apparently) – it was at an advanced stage of construction when POV went to press. If you want a more traditional pub, you could cross the road to **Carter's Bar**, where there are always two or three interesting and well-kept ales on offer. There's more room upstairs if the tiny bar is crowded. Just round the corner the **Mercat** has a new tenant from early October; the beer choice had dwindled in recent years, so let's hope that this change perks up the Mercat's real ale selection. Up in the West End **Harry's Bar** has been taken over by the Shilling Group and refurbished, although we've not revisited it yet. Just across the road **Indigo Yard** won 'Champion Pub of Scotland' in the 2014 DRAM Magazine Awards (the **Bow Bar** won the 'Best Whisky Bar' award, too).

Further away from the centre the **Roseburn Bar** in Murrayfield has had a superb interior renovation and fittingly increased the number of handpumps from one to four! A few bus stops down the road the **Hampton Hotel** is one of the better hotel bars in the city, with the Greene King Abbot Ale hitting the spot on a recent trip. In the suburbs the **Carrick Knowe Inn** (associated with the Scottie) may be getting real ale and in Sighthill **Crofters** now has Deuchars IPA as a regular beer plus up to two guests. There's also a good all-day menu here, including a tasty range of pizzas.

Finally, could all readers and publicans please remember that we can only mention a fraction of Edinburgh's real ale pubs in this review – for additional information see branch web site. CAMRA members also get regular email reminders about pub-based events. Happy drinking and best wishes for Christmas and 2015!

Craig Millar



Cornelius
Beer & Wine

Scotland's best range of bottled beers with a vast selection of premium imports and the finest from Scotland's micro-breweries.
18-20 Easter Road, Edinburgh, Midlothian, EH7 5RG. T: 0131 652 2405
Now online at: www.corneliusbeers.com

THE DIGGERS



6 REAL ALES
VOTED EDINBURGH'S
BEST PUB PIE
DOGS WELCOME
FULL SKY PACKAGE
OVER 250 MALTS
40 MALTS £2.50 FOR 35MLS
OPEN DAILY 11AM UNTIL 1AM
1-3 ANGLE PARK TERRACE
EH11 2JX - 0131 337 3822
FIND US ON FACEBOOK "THEATHLETICARMS"

The Old Bell Inn



The legendary Southside local.
Proud purveyors of quality cask ales.

233-235 Causewayside | Edinburgh | EH9 1PH
0131 668 1573
www.oldbelledinburgh.co.uk

BEER AND LOTHIAN

Real ale drinkers in East Lothian have enjoyed a spate of local beer festivals this year. Soon after we went to press the renowned annual Remembrance Day Beer Festival was due to be hosted by **Staggs** in Musselburgh. This followed events at the **Kilspindie House Hotel** in Aberlady (the 'East



Kilspindie House Hotel

Lothian Beer Festival' with beers from Top Out, Black Metal, Broughton, Knops and Freewheelin' amongst others) and the **Tweeddale Arms** in Gifford (with no less than five

Stewart Brewing ales on gravity in the beer garden as well as Knops, RCH and others on tap in the bar). Malcolm Duck at the Kilspindie told us that he is now planning ahead for the 2015 beer festival. Up the road at the **Old Aberlady Inn**, however, real ale was withdrawn due to poor sales, to be followed by complete closure in October!

Elsewhere in East Lothian the **Tower Inn** in Tranent was taken over from Greene King by new pubco Hawthorn Leisure, which unfortunately led indirectly to the withdrawal of real ale. Hawthorn apparently have an exclusive drinks distribution deal with Matthew Clark, who do not supply cask ale in sizes less than a firkin (the Tower needs pins, i.e. half the size of a firkin). CAMRA has contacted Matthew Clark to try to get real ale pins added to their list to suit smaller wet-led pubs – exactly the type of pub that Hawthorn said that they could re-invigorate. A few miles down the road in Haddington, **Number 7** at the Conservative Club is closed for the foreseeable future pending further discussion by members. Along the river the **Tyneside Tavern** has new tenants, John and Irene Espie (who also have the **Horse and Hound** at Bonchester Bridge near Hawick) and continues to offer the largest range of real ales in the town.

Across the Garleton Hills in North Berwick there are, as forecast in POV63, new chrome handpumps replacing the former fountains in the much-expanded bar at the **Nether Abbey Hotel**; ales from Tryst, Alechemy, Tempest and Knops are often featured. In the town centre the **Herringbone** has opened but doesn't sell any real ale at all, so you'd have to



Nether Abbey Hotel - new frontage

head to the **Ship Inn, Auld House** or **Golfers Rest** to find some. In other news, there's a second handpump at the **Golf Inn** in Gullane, which has been used for dispensing **Sugarpine Wilderness**; the

public bar at the **Goblin Ha'** in Gifford reopened in the summer as planned; and the **Crown and Kitchen** in East Linton gained Cask Marque accreditation in June, as did the **Ship Inn**, North Berwick in October, two of only a few such pubs in East Lothian. Finally there's the good news that

a second handpump is planned at the **Mercat** in Whitecraig.

In Midlothian there are said to be plans to install real ale at the **Polton Inn** in Polton, near Lasswade. The **Laird and Dog** in Lasswade itself certainly has a good selection of guest beers in its dog-friendly bar in addition to Deuchars IPA. Not far away the **Melville Inn** (near Dobbie's Garden Centre) has been refurbished inside and has appropriately, had a garden extension. Greene King have built a new 'Farmhouse Inn' pub/restaurant, the **Elginhaugh Farm**, just over the road in Eskbank. With the **Cockatoo** in Millerhill and the **Old Colliery** at Shawfair slightly to the north, there's no shortage of food-led pubs (that also sell real ale) in this area.



The Laird and Dog

Moving across to West Lothian (and other areas just outwith Edinburgh) the Wetherspoon pubs in Livingston both won recognition in the recent Best Bar None awards: silver for the **Newyearfield** and gold for the **Almond Bank**. Both pubs also staged a Hawkshead Brewery Beer Festival in the summer in addition to the regular JDW spring and autumn festivals. The **Bridge Inn** at Ratho has continued to rack up accolades, including Dog Friendly Pub of the Year (DRAM Scotland Awards 2014), Best Food Pub (Great British Pub Awards 2014) and Pub of the Year Scotland (AA Hospitality Awards 2014). Congratulations to Graham Bacchanal and his team at this leading real ale pub!

Keeping with the 'bridge' theme, the **Three Bridges** at South Queensferry (below), has responded positively to our remarks in the last edition by installing three handpumps serving a variety of Caledonian Brewery beers, including Deuchars IPA and Flying Scotsman. The bar has



outstanding views of the eponymous bridges and is open from 9am for breakfast. Further south-west the **Grapes** at East Calder has a new tenant who is keen on real ale so we have hopes that it might be reintroduced to this former Good Beer Guide pub. Finally, nearby in Mid Calder the **Black Bull** has removed Deuchars IPA as a regular beer and was trialling some of the new McEwan's range from Wells and Young's in the summer. Happy Lothian drinking!

Craig Leith

CAMRA fact - the hop is a member of the hemp family, and a relative of both cannabis and the stinging nettle.



**SELECTED
CASK ALES**
£3.00 FOR CAMRA MEMBERS
WITH CAMRA MEMBERSHIP CARD
ROTATING CASKS

M & G.

THE MASH TUN
beer house & kitchen
154 EASTER ROAD
EDINBURGH EH7 5RL
TEL: +44 (0)131 661 3696
FACEBOOK.COM/THEMASHTUN
TWITTER.COM/MASHTUNPLU

GREEN MANTLE
bar & buffalo burgers
44 WEST CROSSCROFT
EDINBURGH EH8 9JP
TEL: +44 (131) 662 8741
FACEBOOK.COM/GREENMANTLE
TWITTER.COM/GREENMANTLE

BOOKINGS & PARTIES WELCOME
CHECK EVENTS ONLINE

Five Real Ales Always On.
Bar meals served daily.

Restaurant open Tues to Sun
5.30 - 9.30




f Find us on Facebook

The Grey Horse Inn
20 Main Street, Balerno
0131 449 2888



THE BAILIE
like your local should be

2-4 St Stephen St Stockbridge - Edinburgh
EH3 5AL | 0131 225 4673

www.thebailiebar.co.uk



INN THE BORDERS - 1

We start this issue by putting the pubs of the 'Middle Eastern' Borders under the spotlight, i.e. those in the strip of villages running north to south about 5-7 miles from the North Sea coast. This midsummer trip kicked off at the **Craw Inn** in Auchencrow. As always, there was good banter with the



The Craw Inn

regulars at the bar. Landlord Trevor had excellent Mordue Three Bridges, Orkney Dark Island (his own favourite) and Greene King IPA on handpump, with real cider on gravity from the box. A visit during one of the Craw's beer festivals is highly recommended, when

up to seven handpumps can be in use! Occasional Travelsure 34 buses call at the village, which can also be reached after a steep uphill walk from the A1 bus stop (253 bus).

A few miles down the road the larger settlement of Chirnside boasts two real ale pubs (and a remarkable Art Deco school which must be seen). The **Waterloo Arms** is a welcome rarity in the Borders – a previously closed pub (latterly the Chirnside Inn) which has been

reopened. This crossroads pub was rescued by a consortium of eight local businessmen, at least one of whom you'll usually meet in the bar. There was still some work in progress when we called (accommodation will



The Waterloo Arms

be offered later) but the bar was in full working order, serving good Hadrian Border Tyneside Blonde and Farne Island. Dogs on leads are welcome in the bar and the food business is being re-established. Just up the road in the centre of the village lies the **Red Lion**, a friendly no-nonsense pub with a pool table, TV and two dartboards. It welcomes dogs in the bar and there's also a comfortable lounge for diners. Tyneside Blonde, Chirnside's favourite ale, is the regular cask ale here. Again there was good chat with the locals, who were keen to recommend other pubs in the area.

One such pub was the **Allanton Inn**, not far to the south in the small village of Allanton, with its traditional wide main street. This



Good Beer Guide regular is very popular for its top-quality food, but also has a small bar area where drinkers are welcomed. Katrina served us up some Scottish Borders Game Bird which was on top form, with Timothy Taylor

Landlord also on the pumps. The Allanton has one of the very best pub gardens in the Borders, with the hillsides and fields stretching away into the distance.

Keeping in the east, real ale has finally reappeared at the **Anchor Inn** in Coldingham but there is bad news from Eyemouth, where the **Tavern** (right on the beach) has stopped selling its seasonal house ale and removed the handpump. The **Redhall Cottage**, a mile out of town, has been up for sale (with beer availability uncertain) which makes the **Oblò Bar and Bistro** down by the harbour the best bet for real ale in Eyemouth. Heading south past the **First and Last** at Burnmouth, with its consistently excellent Tempest beers, we can cross the border to Berwick-on-Tweed to visit the nearest 'micropub' to Scotland, the new **Curfew** in Bridge St. This great little bar sells four rotating real ales, with no keg beer at all. Back over the border the **Cross Inn** at Paxton, just north of the Tweed, was instrumental in saving the 2014 Paxton Gala Day after it had been threatened with cancellation, thus helping to ensure that over £1400 was raised for a cancer charity. Rare beers from across the border can be found here, such as the 4.5% Firebrick Elder Statesman from Blaydon. In the small village of Swinton the **Wheatsheaf Hotel** won 'Best Borders Restaurant' and 'Best Small Country Hotel' at the 2014 Scottish Hotel Awards, but was put up for sale later in the year and developments are awaited.

There's lots going on around Jedburgh! In the town the **Forrester Arms** (Belters Bar) is once again selling a rotating real ale. The **Carter's Rest** has also started selling real ale, with Harviestoun Bitter and Twisted one of the regular choices. The **Spread Eagle** acquired new Swedish owners recently, so perhaps cask ale will reappear there, too. Also in Jedburgh the **Canon** (Exchange Inn) is an established real ale favourite, with a welcoming fire for winter visits. North of Jedburgh, the **Ancrum Cross Keys** is the subtly different new name for Scottish Borders Brewery's pub in Ancrum (the destination for the CAMRA Branch Christmas social in December!). The pub, which recently celebrated its 200th birthday, has three SBB beers on handpump and now enjoys longer opening hours, a new front patio and beer garden and a family-friendly 'snug'. Further west the new (June 2014) **Born in the Borders** is open during the day at Lanton Mill, just by the SBB brewery, and sells its real ale. Finally the **Lilliardsedge Bar Tavern** (between St Boswells and Ancrum) has been advertising real ale in the local press and on closer inspection was found to have two real ales on tap (one in the winter). Winter opening hours will be 12:30-23:00 Thursday to Sunday until the caravan park and golf course on site start getting busier again in the spring.

Far down in the Borders lies Newcastleton. The **Liddesdale Hotel** has now been reported selling real ale only during the annual Copshaw Festival. There's better news from Selkirk, where the real ale **Heatherlie House Hotel** has been joined by the **County Hotel**, which has restarted selling cask ale. The new Wetherspoon's in Peebles, the **Cross Keys Hotel**, opened on schedule in July and sells five or six ales in two bars under the managership of Craig Henrys. Also in Peebles the **Green Tree Hotel** has discontinued real ale citing poor sales, but that still leaves the town with the most real ale pubs in the Borders, the others being the **County Inn**, **Crown Hotel**, **Neidpath Inn**, **Tontine Hotel** and the superb **Bridge Inn**, where the excellence of the cask beers is matched only by the beauty of the original porcelain gentlemen's urinals! Along the road at Innerleithen the **Traquair Arms Hotel** and **St Ronan's Hotel**

INN THE BORDERS - 2

have been joined as cask ale outlets by the club **Lodge St Ronan's 856** (Scottish Borders beer at weekends). By the way, in Hawick the **Masonic 424 Lodge** is now selling ale from SBB all year, not just in the summer.

The **Ladhope Inn** in Galashiels has been refurbished inside. Deuchars IPA and a guest beer can be found on handpulls. Down the hill Susan English at the **Hunter's Hall** (Wetherspoon) is planning more emphasis on real ale, including 'meet the brewer' events; also in the town centre the **Salmon Inn** is a lively locals' pub selling three real ales including Black Sheep Bitter. The lease of the **Clovenfords Country Inn** in nearby Clovenfords has been advertised for sale. The countdown is on for the opening of the Borders Railway in 2015, which will no doubt bring many more real ale explorers to the Galashiels area and beyond. The town is already a hub for bus services to neighbouring towns like Melrose – we'd like to apologise to the **King's Arms, Ship Inn, Burt's Hotel** and **George & Abbotsford** (which has opened a new garden area and has a dedicated Tempest tap) for the fact that the planned 'spotlight on Melrose' has been held over until POV 65!

Finally, right at the north of the Scottish Borders area the **Allan Ramsay Hotel** in Carltons has reopened with new tenants after a period of uncertainty and has real ale on sale. Just down the A702, the **Gordon Arms** in West Linton is well worth a visit for its dedication to the real ale cause. Keen observers will have noticed that there's nothing reported here about Denholm, Duns, Coldstream, Lauder, Earlston or Kelso (but see elsewhere in POV for news of the Cobbles Inn) – if you've any pub or beer news from these areas why not send it in to CAMRA? We'd love to hear from you!

T B Shiels

The Cobbles
Freehouse & Dining

EDINBURGH & SOUTH-EAST SCOTLAND
PUB OF THE YEAR 2012-2014

We are the Brewery Tap for



**TEMPEST
BREWING Co.**

We have an AA  Rosette for our Dining Menu,
and we serve excellent British pub classics.

We have a live music session every Friday
from 10pm until closing time in association with
the Kelso Folk & Live Music Club.

01573 223548

7 Bowmont Street Kelso TD5 7JH

www.thecobbleskelso.co.uk

Scotia Welding & Fabrication



Micro Brewery equipment from individual components to a turnkey application

All aspects of brewing consultancy if required

admin@scotiawelding.co.uk 01578 722 696

www.scotiawelding.co.uk

NEW Brew School – learn from George Thomson how to brew world class beer!

Why it really is better down the pub



The British Pub is at the forefront of one of CAMRA's main Campaigns. For CAMRA it is simple - no pub means no real ale. The Pubs Campaign is of course much more than that. The British pub in all its different manifestations in the four nations of the UK, whether it be a country inn or hotel, or an urban pub or street corner bar, is a unique institution, woven into the fabric of the varied histories of these islands. Despite all the gloom about closures and changes of use the pub is alive and well. How do we know? Take another look at our front page. Nine pubs, inns and hotels are featured there. They vary greatly from each other, but they have three things in common. They all sell high quality real ale. they have put tremendous effort into what they do and they have been especially recommended to us by readers of this magazine.

Clark's Bar, - previously one of Edinburgh's leading real ale pubs. the bar then experienced a period of uncertainty, not helped by changes in the pattern of working and social life in the surrounding area. Under the present management Clark's is regaining its former high status for quality real ales.

The Bridge Inn (pictured above)- under its present owners since 2010, the Bridge has this year been sweeping up prestigious food and drink awards left right and centre (see Beer and Lothian). The inn is also a superb location for that necessary exercise, situated on the side of the Union canal.

The Mash Tun - an urban reinvention, with its stripped down interior and emphasis on cask and craft beers, both on tap and bottled. The food menu offering includes beer matching suggestions. The pub reflects the changing nature of its surroundings in Easter Road.

The Exchange (Daltons) - a really good example of building up an excellent trade by attention to the details of good service and high quality real ales, which have been built up from next to nothing. The pub has an outstanding Victorian interior and was once the Hawick Corn Exchange.

The Flotterstone Inn - the start or end point for healthy exercise par excellence, located almost opposite the Pentland Hills Ranger Centre and car park. The present owners have developed a wide ranging food menu catering for all tastes, and the landlord is an enthusiastic supporter of local brewing, which is probably why the Stewart Pentland IPA is so popular.

The Castle Arms - another pub which has benefitted enormously from a change of ownership. At the top of the Royal Mile, sitting alongside specialist restaurants and the ubiquitous back packers hostel, the Castle Arms does a great job of serving both tourists and local folk with high quality real ales and a wide range of food. Finding the outside drinking area can be a challenge but is rewarded by the great view overlooking Victoria Terrace.

The George & Abbotsford - demonstrates the amazing range of outlets in this readers' collection. The G & A is a fine hotel situated in the centre of picture perfect Melrose. Like other establishments mentioned here the real ale offering has been built up to its present high quality over the years. The new owners have carried out considerable redecoration. Fans of Tempest Beers will often find one of the range on offer in the bar.

Dalriada - it is one thing to embrace the cause of real ale when starting but another to continue with high quality offerings for 10 years, which is what the owners of the Dalriada have done. This is another of our selection from where you can get your exercise, situated as it is on the Portobello - Joppa promenade. Apart from including a high quality guest real beer from an extensive range of small breweries, the Dalriada regularly supports live music events and festivals.

The Ancrum Cross Keys - another reinvention, but this time in the heart of the Borders. Now in the charge of the Scottish Borders Brewery this pub is about to celebrate its 200th anniversary but demonstrates how necessary it is to keep up with current trends. Therefore there is a wide ranging food offering with much local produce used, but also a front bar with a real fire, and of course regular real ale offerings from the Brewery.



Readers - let us know if there is a pub you visit regularly or that you know of that would look well in this company. Contact us and remember to include any particular features or specialities that would attract other readers. Pubs with regular, good quality real ale only, please. Contact details are on Page 2.

How many of the pubs do you recognise on our front page? Reading from left to right, from top to bottom, they are:-

Top row:- Clark's Bar, Edinburgh; the Bridge Inn, Ratho; the Ancrum Cross Keys, Ancrum.

Middle row:- The Exchange, Hawick; the Mash Tun, Leith. the Flotterstone Inn, Glencorse.

Bottom row:- George & Abbotsford, Melrose; Dalriada, Joppa; Castle Arms, Edinburgh.



Barney's
BEER

BREWED AT SUMMERHALL, EDINBURGH

POV Late news - new drink driving limit in Scotland of 50 mg alcohol/100 ml blood is being introduced. Following approval by the Scottish Parliament it is likely to be in force on December 5 this year. Ahead of an awareness campaign, Police Scotland warn that there will be, in effect, 'no safe limit' for drivers.

News of the Wort - 1

Alechemy

The beer range continues to expand, with Starlaw (a 3.5% extra pale ale), Bad Day at the Office (4.5% golden ale) and 10 Storey Malt Bomb (4.5% 80/- ale, with 10 different malts) now added to the permanent cask beer portfolio. Alechemy also brewed Strachan's ERA, a 4.7% Irish Red Ale, which was on cask at the **Stockbridge** Tap and other venues in the autumn.

A bottle-conditioned IPA series has been launched with Utopia (6.1%) to be followed by A'merica at 6.3% - James says that this will continue until they brew The Best IPA in the World! An additional brewer has been recruited, taking the brewhouse staff to three in total.

Barney's

Barney reports that things are going well at the brewery, with volume in cask, keg and bottle-conditioned all growing steadily. There are four established ales in the permanent range; also look out for some limited edition beers coming up, including a Sorachi Ace version of Volcano IPA.

The second winter Summerhall beer festival will take place on 5th and 6th December, featuring Williams Bros, Fyne Ales (and of course Barney's) as well as 'craft spirits'.

Belhaven

Head Brewer George Howell retired from the brewery in September. In due course a Master Brewer will be appointed by Greene King to oversee brewing at both the Belhaven and Bury St Edmunds sites. In the meantime Greg Forrester, the newly appointed Engineering Manager, is looking after day to day operations at Belhaven.

Black Metal Brewery

Jaan Ratsep, co-founder of Black Metal Brewery, launched his bottle-conditioned Yggdrasil Pale Ale (6.6%) and Will-o'-the-Wisp (6% Smoked Ale) at the **Cork and Cask** off licence in Marchmont at the beginning of August, followed by a further launch night at **Cloisters** a few weeks later. He is brewing at Top Out in Loanhead.

The first cask ale, the powerful, dark Blood Revenge (6.6%), appeared at the East Lothian Beer Festival at the **Kilspindie House** in September. This was re-badged as Red Wedding for **Cloisters** 'Game of Thrones' Beer/Mead Festival the following month. (With acknowledgements to Richard Taylor of Beercast for some of this information).

Broughton

It is fair to say that Broughton Ales has truly shaken off its dusty image. Broughton beers are once again treated with respect and are now competing well in what is a thriving and competitive market. Evidence of Broughton's success was to be found at the Ayrshire Beer Festival in Troon, where the ruby-red Dark Dunter (4.8%) won 'Beer of the Festival'.

Bret Retallick, Broughton's young and energetic MD, took the Broughton message to Paris recently when he attended the SIAL 2014 Trade Show, which has a large craft beer section.

Caledonian

The Commonwealth Games in Glasgow was an important showcase for Caledonian Brewery; as they said at the time they were 'excited and honoured' to be the official provider of Commonwealth Gold (3.9% Golden Ale), which was widely available in pubs in July and August. Also, the 5.5% Trojan Horse India Dark Ale was a spectacular Caley entry in the 50-strong beer list for Wetherspoons' Autumn Beer Festival.

During Cask Ale Week, the brewery organised a tutored tasting night which attracted a record audience. More than 150 Facebook/Twitter users who interact with the brewery on line, were invited to the brewery to try five ales under the instruction of the brewery's Craig Steven. The

@Caledonianbeer's Twitter conversation reached a further 20,000 Facebook and Twitter users during the evening.

MD Andy Maddock said:- "It's great to be able to invite users to our brewery and indulge in the ultimate social occasion - a pie and a pint! The interactive session gave our guests the opportunity to ask questions directly to the brewers while tasting five beers. The tastings were shared on Twitter and Facebook so people who weren't at the brewery could join as well".

Carbon Smith

This self-styled 'pico-brewery', now based in Newington, took a significant step in October when its first casks were filled. Cask Mooze (milk stout) appeared for the first time in the **Guildford Arms** at the end of October and was very well received. As Carbon Smith Tweeted: 'CAMRA will probably be very happy' - and we are! Look out also for the beers at the **Potting Shed**.

Elixir

This has been a year of collaborations for Ben Bullen. Most recently he joined the guys at Pilot to brew a pink saison featuring couscous, sumac, hibiscus, kaffir lime leaves and rose water (the pun in its name is so bad that we can't repeat it!). The **Cask and Barrel (Southside)** had a rare version of this in cask form in October. Before that there was Sugar Lumps, a 7.7% imperial stout brewed with Edinburgh home brewer Ben Hislop, featuring Demerara and Belgian candy sugar; and Sevy Saison, a 5.3% hemp seed saison brewed with Ben's wife Sevara.

Forth Bridge Brewery

FBB's first ever beer, the 3.8% Chai Spice IPA, was brewed in July 'in Morningside with help from some friends'. Work is continuing at the new brewery site in South Queensferry, which will have room for up to 44 fermenting vessels to cope with expansion! The first beer series to come from the brewery will be called 'Dookers' - Freezing IPA, Extreme 80/- and Baltic Stout. The crowd-funding 'Beer for Life' exercise has continued throughout the year.

Fowler's Ales

It seems that brewing at the in-house brewery in the **Gothenburg** at Prestonpans is now being undertaken by De Brus, based in Dunfermline. In August Prestonpans Punch 80/- was produced to commemorate the Commonwealth Games gold medal victory of the boxer Josh Taylor from Prestonpans, complete with a picture of Josh on the pump clip.

Freewheelin' Brewery

Freewheelin' have a new Spicy Winter Ale lined up for the colder weather. Look out for Freewheelin' Ales at the **Bridge Inn** and **County Hotel** in Peebles, the **Gordon Arms** in West Linton, the **Leadburn Inn** and the **Stable Bar**, Mortonhall, Edinburgh.

Greyhound Drinks Company

This is a new company based in Powderhall, Edinburgh. Their first bottled product was 'Dune Surfer', a 2% fruit beer brewed at Cameron's Hartlepool and available through the Margiotta chain.

Growler Beers UK

The popular Morningside beer shop said in July that they were making early plans to brew their own beer - a summer beer, a winter beer and a lager.

Hanging Bat Brewing Co

This brewery now has a new premises, a 15,000 sq. ft unit in East Lothian, and work is continuing to fit it out. Some brewing has been done elsewhere (e.g. at Six Degrees North, in Stonehaven) with the first cask beer, a Pale Ale, appearing at the **Bow Bar** in June. The company also sent an impressive total of eight beers, including a collaboration with St Andrews Brewing Co, to the IndyManBeerCon at

News of the Wort



Watch the space.

Just a reminder of some of the bar clips, photos & logos coming to a pub near you in the near future. All the breweries shown here feature in the News of the Wort article. If you come across any others let us know. Contact details on Page 2.



Inside Knops



advertisement

GREAT RANGE OF QUALITY REAL ALES AVAILABLE

Featuring great ales such as





<p>THE PLAYFAIR Omni Centre, Greenside Place, Edinburgh Tel: 0131 524 7790</p>	<p>THE BLACKSMITH'S FORGE IN THE GOOD BEER GUIDE 2014 5 Newmill Road, Dalkeith Tel: 0131 563 5100</p>	<p>THE NEWYEARFIELD Designer Outlet Shopping Centre, Livingston Scotland EH54 6QX Tel: 01506 428770</p>
<p>THE FOOT OF THE WALK 183 Constitution Street, Leith, Edinburgh Tel: 0131 553 0120</p>	<p>THE STANDING ORDER 62-66 George Street, Edinburgh Tel: 0131 225 4460</p>	<p>THE ALMOND BANK Designer Outlet Shopping Centre, Livingston Scotland EH54 6HP Tel: 01506 424190</p>
<p>THE WHITE LADY 98 St John's Road, Corntonphine, Edinburgh Tel: 0131 314 0680</p>	<p>THE ALEXANDER GRAHAM BELL 128 George Street, Edinburgh Tel: 0131 240 8220</p>	<p>THE DAVID MACBETH MOIR IN THE GOOD BEER GUIDE 2014 Bridge Street, Musselburgh, Scotland EH21 6AG Tel: 0131 653 1060</p>

Subject to local licensing restrictions and availability at participating free houses.

wetherspoon

Manchester in October! The small kit at the Hanging Bat is still being used for Alpha Project experimental brews, including a collaboration with Natural Selection Brewing.

Innis & Gunn

Edinburgh Pale Ale, a 4.2% light golden cask ale, was supplied exclusively by Innis and Gunn to the Wetherspoon's Autumn Real Ale festival. This followed on from last year's offering, the outstanding Toasted Oak IPA.

Knops

Knops has enjoyed a great summer and a very busy Edinburgh Festival, when Bob Knops sold out three evenings of tastings and discussion at the **Pomery Bar** in Edinburgh. After a few staff changes there are now five people working in the company, with Julie Scanlon, Martin Doherty and Fraser Jones coming in with a mixture of full- and part-time roles in both production and sales.

The four new vessels which arrived in the brewery at the beginning of the year have helped Knops keep up with demand and increase capacity. A 4% bottle-conditioned version of the 'Crazy Wrangel' wheat beer (out in cask in July) was due to be launched at the end of October, so look out for it in bars and shops.

Krafty Brew

This is another new Edinburgh brewery, based in Bonnington near Leith, and brewing since August. Krafty's unfiltered and un-pasteurised bottled beer has been on sale in the **Raeburn**, and 'own-brew' versions are appearing elsewhere, for example **Elliots Bar** the **Apex Hotel**, Waterloo Place. Krafty were also at the **Ghillie Dhu** the West End Beer Festival in October. There is additionally a very interesting range of 6.1% stouts, including Espresso and Coffee Orange. Krafty's Marina, Marcus and Michael hope to start selling beer in cask and keg shortly.

Natural Selection

This year's main offering from the students from the Institute of Brewing and Distilling at Heriot-Watt University was Mutiny on the Beagle, a full-bodied dry-hopped 5.8% British-hopped IPA. It was launched in July in the **Summerhall** courtyard and then became the first beer to sell out at the Scottish Real Ale Festival! Later in July the team also promoted a 7.5% version called Fitzroy's Reserve.

Old Worthy

This brewery makes its first appearance in these columns: their registered address is in Edinburgh, and most of their beer is brewed at Broughton Ales. The beers have a good presence in Wetherspoon bars and can also be found in a number of Edinburgh pubs including the **Blind Poet**.

Pilot

Pilot have continued to impress with Iced Tea Ale, Mochaccino Stout and the rest of their range, much of it appearing unfiltered these days, including Sunspear (a dry-hopped, unfiltered, version of Iced Tea Ale) which was provided for **Cloisters'** 'Game of Thrones' event. Pilot had a brew day with the staff of **Holyrood 9A** mid-October and the results should have been available in the bar by the time you read this!

Scottish Borders Brewery

SBB have had an excellent summer both in terms of beer sales and its first season at the new **Born in the Borders** visitor centre nearby. The 'Flower of Scotland' beer which was launched to coincide with the Six Nations Rugby was brewed again at Referendum time and proved so popular that further brews have appeared, with some sent for bottling. There are plans for 2015 to continue further foraging and other seasonal brews. For details of developments at the brewery tap, the **Ancrum Cross Keys**, see 'Inn the Borders' in this issue.

Secret Herb Garden

There are herbs, beehives, greenhouses and a licensed cafe at this site on the Old Pentland - Straiton back road at Damhead. Secret Herb Garden Pale Ale (4.5%) has been brewed at Top Out, Loanhead, and features sticky willy and nettle! Brewing of the Pale Ale at Loanhead was expected to recommence in October/November.

Stewart Brewing

The brewery remains very busy and in addition to the well-known regular line-up of Pentland IPA, Copper Cascade, No 3, 80/- and Edinburgh Gold there are many innovative specials appearing in both cask and bottle. Two new 150-hectolitre fermentation tanks have been added to increase brewing capacity.

Generally available in bottle, members of the 'hop series' also make occasional appearances in cask. Look out for the following:-

Radical Road 6.4% Triple Hopped Pale Ale

Black IPA 5% Dark and Hoppy

Hop Jock 5% New Scots Pale Ale

Ka Pai 5.2% South Pacific Ale

Solas 5% Red IPA

Cascadian East 5.4% American Pale Ale

Other cask specials have included the excellent new Dakota American Brown Ale in September. Cauld Reekie was due to re-appear in mid-November and also coming up for the festive season are Weiss Christmas Blanc and Weiss Christmas Noire (wheat beers). Stewart's Craft Beer Kitchen is being used to produce many other limited edition specials.

The brewery has won several awards this year e.g. Midlothian's Best Food/Drink Producer and a whole group of gongs for best European beer at the World Beer Awards (Hollyrood, Solas and Cauld Reekie). Then to cap it all Radical Road was awarded 'Champion Beer of Scotland - Real Ale in a Bottle' at the Scottish Real Ale Festival. This beer has generous additions of hops at five stages in the brewing process, with Magnum added later for bittering.

Tempest Brewing

Director Gavin Meiklejohn was delighted to tell CAMRA in September that the lease agreement for Tempest's new site at Tweedbank had finally been signed, so that building works could be started. He was hopeful that brewing on the new kit could be started by early November.

Tempest came out top again in the 'blind tasting' IPA challenge at the Bow Bar, this time with the (keg) Brave New World. Red Eye Flight had won the previous year.

Thistly Cross Cider

The powerful 7.4% 'real cider' Jaggy Thistle was in great form on handpump at the Berwick Beer Festival in September, where it was joined by many other Thistly Cross products.

Top Out

Top Out continues to focus on its three core beers of Staple, Smoked Porter and The Cone IPA. Availability is increasing in real ale pubs in Edinburgh but the majority of production remains in bottle-conditioned form.

Traquair

Traquair launched a new brew, Referendum Ale (4%), during the weekend-long 'Beyond Beer' event at Traquair House in August. Naturally there were two appropriately labelled pumps for the beer. Pete Brown, no less, also ran an innovative 'Beer and Music' matching session.

Usher's of Edinburgh

After some delay this new brewpub is due to start brewing in mid to late November on a 2.5 barrel plant being constructed by Scotia Welding (see last POV). The head brewer will be Graeme Hirstwood from Inveralmond Perth.



Established in 1995, and set in the historical former All Saints Parsonage, Cloisters has maintained many traditional features while creating a warm and friendly atmosphere.



Relax by the stove, enjoy one of nine cask ales and over 70 malt whiskies.

With carefully selected, maintained and served cask and keg beer from breweries up and down the country, and across the world, there will always be something to quench your thirst.



Serious about food

Hand Crafted Burgers & Seafood

100% Prime Chuck Steak, freshly minced just for us by our local butcher

Not your usual pub grub!

Cloisters Bar, 26 Brougham Street, Edinburgh EH3 9JH
Tel: 0131 2219997  **@Cloisters_bar**

Edinburgh's Pub Signs - 1

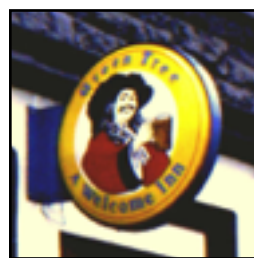
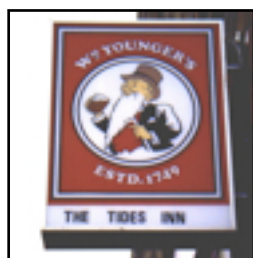


Pub signs are not as traditional in Scotland as they are in England but they can have some distinctive features. In Edinburgh, for example, there are a small number of noted public houses that have had wrought iron suspended signs outside - often for many years, apparently. These include the **Cafe Royal** (West Register Street) and the **Oxford Bar** (Young Street). There used to be a fine example suspended outside the **Old Ship Inn** (now the **Ship**) at the Shore, Leith. In the 1960s when there were numerous sizable breweries in the city a variety of plastic brewery signs appeared. A rare sign from Gordon and Blair's brewery hung outside the **Drift Inn** that existed in Newhaven's Main Street (now closed). Many Usher's brewery signs showing a gold tankard were seen in pubs such as the **Raeburn Bar** (now **Stockbridge Tap**) and the **Tower Lounge** (now **Fisher's Bistro**) at the Shore.

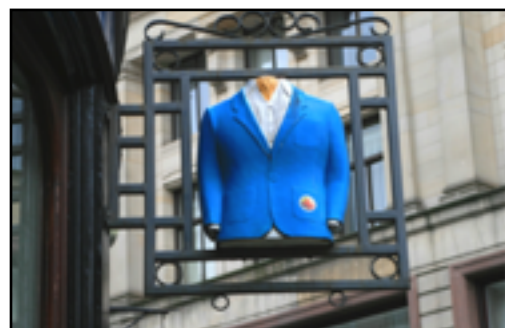
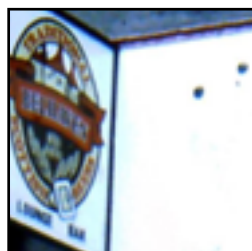
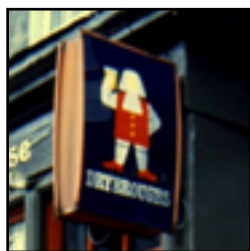


Pubs and bars owned by Scottish and Newcastle often displayed a rectangular sign with four sections. Some years later many of these were replaced with a new yellow William Youngers' sign - this example from the **Auld Toll** (now the **Blackbird**). Many of the original 'Father William' signs were replaced with a red coloured sign and around the same time a blue 'McEwan's' sign appeared. Subsequently Scottish and Newcastle introduced a round 'Welcome Inn' sign and later yet another blue-coloured plastic sign. The signs shown below are from the **Tides Inn** (King's Road, Portobello), **Tower Lounge** (Beach Lane, Portobello), both now closed, the **Green Tree** (Gorgie Road) and **Captains Bar** (South College Street).

Portobello), **Tower Lounge** (Beach Lane, Portobello), both now closed, the **Green Tree** (Gorgie Road) and **Captains Bar** (South College Street).



Many other brewers from Edinburgh, Alloa and Dunbar produced plastic hanging signs too. The examples shown below are from the **Auld Hoose** (now Bert's Bar) in William Street, the **Kilderkin** (Constitution Street), now closed, **Clowns** (previously the Lorna Doone in the High Street), also now closed and finally, the dreadful Diamond Heavy beer and its sign, then sold in the **Blue Lagoon** (Caley Sample Room).



There was also an occasional sign from Lorimers Brewer in Slateford Road - now the site of the Caledonian Brewery. There were also many signs that advertised certain bottom fermented, filtered, artificially carbonated gut rot beers. There were also very distinctive signs. The **Blue Blazer** in Spittal Street has a quite individual hanging sign showing a blue blazer. The black-



and-white picture of the same from 1978 showed an additional hanging pendant with the name of the Edinburgh brewer, T & J Bernard.

Edinburgh's Pub Signs - 2

There are some well crafted signs and some of the better examples, are shown here, just below. These include those at the **Cameo** (Tollcross), the **Half-Way House** (Fleshmarket Close) and the **Grosvenor** (Shandwick Place).



There are also some pub signs which are perhaps not quite what was intended. Most readers of Pints of View will know what a malt shovel looks like – it has a long wooden handle with a large flat wooden head. It is unfortunate that the person who produced the signs for the **Malt Shovel** in Cockburn Street was not aware of that! Of course the pub sign in no way detracts from the pub itself, a long time and much appreciated supporter of the cause of real ale. (*Ed - being close to the High Street, this sign may also attract even more tourists!*)



In Craigmillar there is a public house called **Omans** at Peffer Place, that made the decision to add their address to the name on the hanging sign. After going to all that trouble it is a pity that they spelled 'CRAIGMILLAR' wrongly, though fortunately the writing is small compared to the name of the bar, which is obviously the most important feature.



A special mention must be made of the Edinburgh public houses owned by the Nicholson group for their quality signs. The examples shown here are all distinctive in their own way and play heavily on the varied and fascinating history of the City Of Edinburgh. On the left below is the **Conan Doyle** (York Place), in the centre the **Haymarket Bar** (Haymarket) and on the right the famous **Greyfriars Bobby's Bar** (Candlemaker Row).



There are up to the minute signs too, signs which are becoming abstract, or which draw on the idea of the logo. One of the best examples is suspended outside the **Blackbird** (previously the **Auld Toll**) at 37-39 Leven Street, Tollcross. Is this a sign of the times.....or a sign of things to come?

© 2014 Jim Lawrie

(Editor's Question - only one of the three Nicholson pub signs above is not near a tram stop. Which one is it?)

Ed: Jim Lawrie has been taking pub photos since 1978. He is also the author of a history of the Volunteer Arms (Staggs), Musselburgh. Copies of the book still available for sale at the pub.

ALE WITH AN ACCENT

WWW.MORBREWING.CO.UK



CALL ROSS ON 07593 245000



Join us on Facebook

THE AULD HOOSE

WWW.THEAULDHOOSE.CO.UK 23-25 ST. LEONARD'S ST. EDINBURGH, EH8 9QN 0131 6682934

BOTTLES ALES! YES PLEASE!
CASK ALES! THANK YOU!
KEG

KEG OR CASK, OUR ALES ARE CAREFULLY SOURCED FROM THE UK'S BEST CRAFT BREWERIES AND A SPECIAL SELECTION OF BOTTLED BEERS FROM AMERICA AND THE CONTINENT

QUALITY FOOD SERVED DAILY FROM 12PM - VEGANS & VEGETARIANS CATERED FOR

10% DISCOUNT ON FOOD FOR CAMRA MEMBERS

TO FIND OUT WHAT'S ON RIGHT NOW, FOLLOW US ON TWITTER @THEAULDHOOSE

Scotland needs a Pubs Adjudicator

After almost ten years of constant campaigning CAMRA raised a glass to the Westminster government when, in the Queen's Speech, the last before next year's general election, they announced as part of the Small Business, Enterprise and Employment Bill that they would introduce a Pubs Code and Adjudicator to give some protection to those publicans who have the misfortune to be tenants of the large pub owning companies (pubcos).

The large pubcos have, for years, argued that self-regulation worked well for the industry, completely flying in the face of all the available evidence, such as a recent independently commissioned survey carried out by CAMRA uncovered the shocking fact that 64.5% of large pubco licensees earn less than £15,000 a year and a whopping 74% of licensees consider themselves worse off as a result of the tie.

The Adjudicator will be empowered to ensure that the publican and pub company relationship is subject to a requirement of fair and lawful trading. They will also be expected to ensure that tied publicans are no worse off than free of tie publicans. This legislation aims to redress the power balance between the big pub companies and the licensees tied to them, by acting as a watchdog for the industry and ruling on disputes over rents and beer prices.

Job done you might think. However, as with most things political, there is a sting in the tail and this particular sting is aimed fairly and squarely at those Scottish publicans who are tenants of the large pub owning companies, as the proposed legislation does not apply to Scotland, only England and Wales. This is why, last month, I urged the Scottish Government to introduce a Pubs Code and Adjudicator to protect Scotland's pub trade, following a new survey which reveals 99% of Scottish tied licensees would support this.

Despite over 1000 pubs in Scotland being tied to the large pub companies, and being charged sky high rents and exorbitant beer prices, measures to protect hard-working licensees as part of the Small Business, Enterprise and Employment Bill are not currently being introduced on this side of the border. Scotland is losing two pubs every week according to the latest closure figures – highlighting the urgent need for action, before it's too late.

The evidence unmistakably shows that not only is there the same need for an Adjudicator in Scotland as there is in other parts of the UK, but that tied licensees in Scotland want to see the system put in place. It's for this reason that passing a legislative consent motion (formerly known as Sewell Motion) which allows the Scottish Parliament to bring legislation passed at Westminster that only affects England and Wales into Scots law is clearly the first step in addressing the many issues facing tied pub licensees in Scotland. Over thirty of these have been passed under the current Scottish Government since 2011. This means that, if the political will is there, then the legislation can apply to Scotland and will ensure that entrepreneurial Scottish publicans can benefit from the Act and get on with running successful pubs, without constantly having to count every penny and keep their rapacious landlords off of their backs.

Colin Valentine

CAMRA National Chairman

Tyneside Tavern

10 Poldrate
Haddington EH41 4DA
01620 822221
www.tynesidetavern.com



Wide selection of cask ales -
check our Facebook page for current selection.

Food served all day, seven days a week in the
restaurant and bar.

Or visit our sister pub:

Horse and Hound

Bonchester Bridge, Hawick TD9 8JN

01450 860645

www.horseandhoundcountryinn.co.uk

Two cask beers

Food served all day in the restaurant and bar
Nine en-suite rooms in a traditional country inn

LESLIE'S BAR

Established 1896

*Traditional pub where
Quality of Service and Product
still count*



45-47 Ratcliffe Terrace

Edinburgh EH9 1SU

Tel: 0131 667 7205

Email: info@johnlesliesbar.co.uk

www.realalepubedinburgh.co.uk

Find us on Facebook 

TRYST

Brewing since 2003

CARRONADE
A PALE ALE BREWED WITH CARRON WATER AND MALT AND HOPPED WITH GOLDEN HOP

HIGH VOLTAGE
Truly hopped with hops to deliver an electrifying finish

DROVERS
80/-
A TRADITIONAL SCOTTISH BEER WITH A HOP OF SPICY HOPS

RAJ
A PALE ALE BREWED WITH CARRON WATER AND MALT AND HOPPED WITH GOLDEN HOP

CARRON OAT STOUT
A TRADITIONAL ALE BREWED WITH CARRON WATER AND MALT AND HOPPED WITH GOLDEN HOP

BLATHAN
A PALE ALE BREWED WITH CARRON WATER AND MALT AND HOPPED WITH GOLDEN HOP

Innovation in a glass...

The Volunteer Arms

17 Victoria Street, Dunbar
Tel. 01368 862278

Our cosy pub nestles down by the harbour.

An eclectic mix of Cask Ales served on two handpulls - see board for what's coming!

There is an outside seating area, lovely on a crisp winter's day!

The Volunteer Arms

Festive Menu served till 24th December
Monday to Friday: 12pm - 3pm and 5.30pm - 9pm
Saturday and Sunday: 12pm - 9pm

Restaurant upstairs
Available for bookings & small functions

A Campaign of Two Halves

Fair deal on beer for now!
Save Britain's Pubs!

Instruction to your Bank or Building Society to pay by Direct Debit

Please fill in the whole form using a ball point pen and send to:
Campaign for Real Ale Ltd
28 Hatfield Road, St Albans, Herts AL1 4LW

Service User Number **926139**

Name and full postal address of your Bank or Building Society

To the Manager Bank or Building Society

Address

Postcode

Name(s) of Account Holder

Branch Sort Code

Bank or Building Society Account Number

Reference

FOR CAMPAIGN FOR REAL ALE LTD OFFICIAL USE ONLY
This is a request of the institution to your Bank or Building Society

Membership Number

Name

Residence

Instructions to your Bank or Building Society

Please pay Campaign for Real Ale Limited Direct Debits from the account detailed on the information returned to the signatories named by the Direct Debit Guarantee. I understand that the institution may report with Campaign for Real Ale Limited and it will be passed electronically to my Bank/Building Society.

Signature

Date

Banks and Building Societies may not accept Direct Debit instructions for some types of accounts. This Guarantee should be detached and retained by the payer.

The Direct Debit Guarantee

If there are any changes to the amount, date or frequency of your Direct Debit The Campaign for Real Ale (or our bank) will notify you 10 working days in advance of your account being debited or as otherwise agreed. If you request The Campaign for Real Ale (or our bank) to cancel a payment, confirmation of this amount will date with the date you give us the date of the request.

If an error is made in the payment of your Direct Debit by The Campaign for Real Ale Ltd or your bank or building society you are entitled to a full and immediate refund of the amount paid from your bank or building society. If you receive a refund you are not entitled to, you must pay it back using The Campaign for Real Ale Ltd own form.

If you are not a Direct Debit or you have not authorised your bank or building society to debit your account you may be required to repay the amount you have paid us.

Join CAMRA Today

Complete the Direct Debit form opposite and you will receive 15 months membership for the price of 12 and a fantastic discount on your membership subscription.

Alternatively you can send a cheque payable to CAMRA Ltd with your completed form, visit www.camra.org.uk/joinus or call 01727 867201. All forms should be addressed to Membership Department, CAMRA, 290 Hatfield Road, St Albans, AL1 4LW.

Your Details	Direct Debit	Non DD
Title _____ Surname _____	Single Membership £23 <input type="checkbox"/>	£25 <input type="checkbox"/>
Forename(s) _____	(UK & EU)	
Date of Birth (dd/mm/yyyy) _____	Joint Membership £28 <input type="checkbox"/>	£30 <input type="checkbox"/>
Address _____	(Partner at the same address)	
Postcode _____	For Young Member and concessionary rates please visit www.camra.org.uk or call 01727 867201.	
Email address _____	I wish to join the Campaign for Real Ale, and agree to abide by the Memorandum and Articles of Association	
Tel No(s) _____	I enclose a cheque for _____	
Partner's Details (if Joint Membership)	Signed _____ Date _____	
Title _____ Surname _____	Applications will be processed within 21 days	
Forename(s) _____		
Date of Birth (dd/mm/yyyy) _____		

01/06

Campaigning for Pub Goers & Beer Drinkers

Enjoying Real Ale & Pubs

Join CAMRA today – www.camra.org.uk/joinus

The Boundary Commission - Kirkliston to Newcraighall



The Grey Horse, Balerno

In the last two issues of POV I explored the coastal reaches of our CAMRA Branch. This time I headed inland to visit all of the real ale pubs situated just inside the City of Edinburgh Council's boundaries, from

West to East. As usual, there were a few extra rules e.g. 'no coastal pubs' and 'no clubs, only pubs' (sorry, Swanston GC) as well as the overall aim of completing the crawl in one day by public transport. Also, where there were two or more pubs co-located, I chose one I'd not been to before. In the article the distances in brackets indicate the proximity of each pub to the council boundary – we are non-metric in this one!

Taking a bus at Haymarket I headed off to Kirkliston and my first ever visit to the **Newliston Arms** (1 mile inside). This is a well-appointed large pub with a separate restaurant (vegetarian and gluten-free options), beer garden, etc. situated at the main crossroads in Kirkliston. I found two English beers on handpump – Wadworth Horizon and Bateman's Black & White, a tasty low-a.b.v. dark ale. There's plenty of local history to read about on plaques both inside and outside the bar.

At the **Bridge Inn** in Ratho (2 miles) I got a warm welcome in the bustling bar, which sported three excellent choices on the handpumps – Fyne Ales Superior IPA (7.1%!), Cairngorm Black Gold and Williams Joker IPA. Although it was a bit strong for early lunchtime drinking I went for the Superior IPA and it didn't disappoint, being hoppy and full-bodied. A group of very wet hikers came in and requested bowls of soup all round before even looking for a drink: definitely a popular order on the day. This award-winning pub has a beautiful location right by the canal.

Finding no real ale at the **Ratho Park** at Dalmahoy (1 mile), it was happily only a short walk to the next bus stop; subsequent changes at the luxurious Park and Ride 'station' at Hermiston, and Currie, brought me to the **Grey Horse** at Balerno (2.5 miles), where landlord Paul greeted me like a long-lost friend even though I'd only been there twice before! This fine little bar had no less than five real ales – Greene King Old Speckled Hen, Knops California Common, Strathaven Old Mortality, Orkney Dark Island and Fyne Ales Jarl. There was good banter from the locals and a small fluffy grey pub dog – what more could you ask for? Surely it won't be long before Paul and his excellent pub win a major CAMRA award!

Heading a few stops down the road I came to the smart white exterior of the **Riccarton Inn** in Currie (2 miles).



This has also been very nicely refurbished inside by someone with a keen eye for matching browns, creams and purples and was busy with lunch diners mainly. On the taps were Deuchars IPA and

'Whole Hop' Love Herts (note spelling) which I tried – it's a McMullen brand as I later discovered. It promised fruity and spicy notes but I wasn't really getting it and thought it more like Deuchars! The Riccarton Inn is a comfortable retreat for diners and drinkers alike and also holds regular pub quizzes.

I next took a flying visit (my first ever) to the **Kinleith Arms** in Juniper Green (2.5 miles). This place looked very quiet from the outside but in fact was really buzzing. Once again there were Deuchars IPA and Love Herts on offer – I tried the latter and this time it was definitely more spicy and fruity. This was a good locals' pub which I'll be visiting again when I've got more time, along with its close real ale neighbour, the **Juniper Green Inn**.

Then to the cramped centre of Colinton, where I made a first-time visit to the **Colinton Inn** (2.5 miles). The beers on handpump were Sharp's Doom Bar (which the locals were raving about) and Wells & Young's McEwan's IPA, which was very good indeed. Downstairs at the Colinton Inn you'll find a large function room with its own set of three handpumps. Overall the pub is surprisingly large



for such a tight location. Refreshingly Colinton still has an independent greengrocer-cum-deli which must benefit from the village-style atmosphere of the place, typified by the other real ale pub down the hill, the **Spylaw Tavern**.

Next off, an 18 bus delivered me to the **Hunters Tryst** pub (1.5 miles), which really tries hard with its beer and had four real ales on sale – York Ghost Ale (a nice dark ruby beer which was one of my best on the day), Black Sheep Bitter, Deuchars IPA and Stewart 80/-, the last two being regulars on the bar. I chatted about beer, pubs, prices and the weather with a CAMRA acquaintance and admired the excellent promotion of real ale and Cask Marque (with a CAMRA discount too). It was tempting to spend more time here, but the bus to Hillend beckoned.

By the bottom of the ski centre access road at Lothianburn nestles the **Steading** (10 yards!) with the council boundary running up the road. Their regular beers, Timothy Taylor Landlord and Deuchars IPA, were being poured. Again this pub's promotion of real ale and Cask Marque was admirable. Like the previous pub this place is big on food, with a separate conservatory for diners, but also has plenty of space for the drinker. Its external appearance has also improved greatly in recent times, with many attractive hanging baskets in season. I finished my Landlord and headed off across the bypass on the number 4 bus.

Just up the road at Fairmilehead lies the **Charwood**, formerly the Tusitala/Pavilion. There's just one real ale here, Deuchars IPA, although more may be added. The bar was in fact very busy. This new bar and restaurant have been developed by the **Whiski Rooms** owners, Omni Taverns. It was time to move on, and with the downpour worsening I caught the number 11 bus straight round the corner to Mortonhall, where I sprinted down the river-like road past the garden centre.

The **Stable Bar** (1 mile) has had a slightly chequered recent history, with a brief period of closure followed by a temporary managership. Now under the control of the **Leadburn Inn's** owners, the pub has returned to its busy best.

Boundary continued

The ales on the handpumps were Stewart 80/-, Inveralmond Homecoming Scotland and Scottish Borders Brewery's tasty Dark Horse, my choice. The big log fire was not blazing away that night, but maybe it should have been!

Finally to Newcraighall via the Royal Infirmary where I dropped in to the **Cuddie Brae** (0.2 miles). This is another food-led pub, although a comfortable area for drinkers was helpfully pointed out to me. Regrettably there was no real ale to be had; according to the staff the Belhaven IPA had run out the night before (it was a shame that they couldn't get something on for a busy Friday!). In a sign of the times I was offered a 'craft bottled beer' from the fridge, which at least enabled me to get my BrewDog fix for the day.....

After some halves during the day I was glad of a pint in the **Nether Abbey Hotel** (where the March 2015 CAMRA branch meeting will be held) when I got back to North Berwick - Stewart's new and very good Dakota Brown Ale. I was already planning the pub crawl for the next Pints of View, which will take in ten of the newest pubs and real ale conversions in Edinburgh!

Pat Hanson

(Editor's note - Pat has apologised for omitting the **Toby Carvery** at Liberton from his survey. It's a mere 1.5 miles within the boundary and he will be calling in before POV 65!)

CAMRA fact - beer (4.6%) equals 41 calories / 100ml, whereas wine is 77, milk is 64 and apple juice is 47.

ABBOTSFORD

1902



Scottish Restaurant 'Above'
Edwardian Island Bar
7 Real Ales, Whisky Menu

TEL 0131 225 5276

www.theabbotsford.com

3-5 Rose Street



CUMBERLAND



New Town Bar , Coal Fire
Locally Sourced Food All Day
Sunday Roast, 8 Real Ales

TEL 0131 558 3134

www.cumberlandbar.co.uk

1 Cumberland Street



CANONS' GAIT



Royal-Mile Bar & Bistro
Live Music, Wed / Thur / Sat
Cellar Bar - Free Hire, Real Ales

TEL 0131 556 4481

www.canonsgait.com

232 Canongate



GUILDFORD ARMS

1898



Boutique 'gallery' Restaurant
Overlooks Classic Victorian Bar
Terrific Range Of 10 Real Ales

TEL 0131 556 4312

www.guildfordarms.com

1 West Register Street

