

Issue 73

–  
Summer 2019

–  
FREE

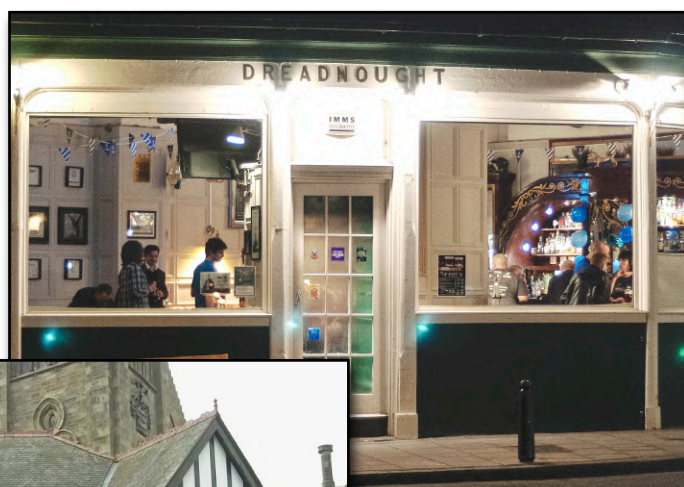
# PINTS of VIEW



Campaign  
for  
Real Ale

*The CAMRA Magazine for Edinburgh and South-East Scotland*

## *Pubs of the Year 2019*



### **In this issue ...**

New Brewpubs in Edinburgh • Beer Styles Explained • Tiled Pubs Part 3: Bennets Bar  
Latest real ale pub news • Latest local brewery news ... *and more!*

**Pints of View** is the magazine of the Edinburgh & South-East Scotland Branch of the Campaign for Real Ale (CAMRA), an independent, voluntary organisation campaigning for real ale, community pubs and consumer rights.



[www.edinburghcamra.org.uk](http://www.edinburghcamra.org.uk)

 [edinburghcamra](https://www.facebook.com/edinburghcamra)

 [@CAMRA\\_Edinburgh](https://twitter.com/CAMRA_Edinburgh)

#### Editorial Board

Scott Telford ([poveditor@edinburghcamra.org.uk](mailto:poveditor@edinburghcamra.org.uk))

Pat Hanson ([advertising@edinburghcamra.org.uk](mailto:advertising@edinburghcamra.org.uk))

Callum Bracher

Charlie Hughes

#### Branch Membership Secretary

Mike Just ([memsec@edinburghcamra.org.uk](mailto:memsec@edinburghcamra.org.uk))

#### Branch Secretary

Jim Darroch ([secretary@edinburghcamra.org.uk](mailto:secretary@edinburghcamra.org.uk))

Views expressed in *Pints of View* are not necessarily those of the Edinburgh & South-East Scotland Branch of CAMRA, the editor or the publishers. While every effort is made to ensure the accuracy of the information contained in *Pints of View*, no responsibility can be accepted for any errors or omissions.

*Pints of View* accepts advertising on condition that its inclusion does not necessarily imply an endorsement or approval of content. The editor reserves the right to edit contributions sent for publication. All marks and copyright acknowledged.

Circulation: 9,000 copies distributed throughout Edinburgh, Lothian and the Borders.

### Trading Standards

*Contact the Citizens Advice consumer helpline if you need help with a consumer problem.*

The consumer helpline can:

- give you practical and impartial advice on how to resolve your consumer problem
- tell you the law which applies to your situation
- pass information about complaints on to Trading Standards (you can't do this yourself)

Citizens Advice consumer helpline: **03454 04 05 06**  
Monday to Friday, 9am to 5pm.

For more information, see:

[www.citizensadvice.org.uk/scotland/consumer/](http://www.citizensadvice.org.uk/scotland/consumer/)

## Editorial

The battle for real ale is not yet over! We were disappointed to learn recently of Marston's decision to withdraw supplies of Marston's Group cask ales from its pubs in Scotland due to lack of demand. This affects three pubs in our branch area and around 22 across Scotland. More on this story on page 12.

On the brighter side, we are pleased to report (see page 10) that there are several brewpubs now brewing in the branch area, and some of these at least will be producing real ale.

This year's CAMRA Members' Weekend and AGM was held in Dundee in April. Jackie Parker officially stepped down as National Chairman, the post being taken over by Nik Antona, a member of the National Executive for the last 10 years. This was also the first Members' Weekend for our new Chief Exec, Tom Stainer, formerly editor of *BEER* and *What's Brewing*.

*Scott*

*Cover photos: Jon Addinall (Staggs and Bridge Inn), Fred Chrystal (Stockbridge Tap), Neil Johnson (Dreadnought and Jolly Judge).*

### Advertising Rates

Our standard fees for advertisements are as follows:

- Full page: £285
- Half-page: £190
- Quarter-page: £115
- One-eighth page: £75
- Back cover: £POA

We normally also give a discount for multiple inserts in a single publication.

All enquiries to [advertising@edinburghcamra.org.uk](mailto:advertising@edinburghcamra.org.uk)

### Subscriptions

This magazine is available by subscription at the following rates:

- 4 issues – £8.00
- 6 issues – £12.00

We currently publish *PoV* twice a year. You can also read the current and previous issues on our website.

Subscription requests with a cheque payable to "Edinburgh CAMRA" should be sent to:

Pints of View Subscriptions  
c/o Jon Addinall  
22 Wadingburn Road  
Lasswade  
EH18 1HS

# CAMRA Calling

Branch News

## Branch Social Meeting (also Beer Day Britain)

2:30pm 15 June

**Grey Horse**, Balerno

## Two-Pub Social: West Rose St Wander

7:30pm 10 July

**Black Cat, Rose & Crown, Dirty Dick's**

## Branch Social Meeting

2:30pm 13 July

**Ryrie's**, Haymarket Terrace

## Branch Social Meeting

2:30pm 17 August

**Venue TBC (outside Edinburgh)**

## Alechemy Tasting Panel Visit/Branch Trip

TBC (October)

## Edinburgh Diverse Drinkers (LGBT) Social

Monthly, on the first Monday

**Regent Bar**, Montrose Terrace

Please check [www.edinburghcamra.org.uk/diary](http://www.edinburghcamra.org.uk/diary) for the latest event information and updates.



## Scottish Real Ale Festival

Regrettably, there will be no Scottish Real Ale Festival in 2019. Despite an extensive search, it has not been possible to identify a suitable venue that would ensure a viable festival. The search will continue in the hope that we can find a new home for 2020.

## Forthcoming Branch Events

All venues for branch events are in Edinburgh unless otherwise noted.

### Two-Pub Social: Piershill Parade

7:30pm 12 June

**Barrel House, Scottie**



CRAFT BEER. EDINBURGH. SCOTLAND.

BREWING OUT OF LOANHEAD, OUR CUSTOM-BUILT BREWERY IS FULLY STOCKED WITH FRESH BEER IN BOTTLE, CAN, MINI CASKS OR GROWLERS FILLED FROM OUR 18-TAP FILLING STATION.



WHY NOT HAVE A GO YOURSELF?! BREW YOUR OWN BEER IN OUR CRAFT BEER KITCHEN; THE UK'S FIRST BREW-IT-YOURSELF FACILITY, PACKAGED INTO EITHER BESPOKE BOTTLES OR A CASK, PERFECT FOR EVERY WEDDING, PARTY OR EVENT.

BOOK ONTO TOUR OF OUR BREWERY: FRIDAY EVENING TOUR (2 HOURS @ £15PP) OR A SATURDAY TOUR (1 HOUR @ £10PP) - SIGN YOURSELF UP ON OUR WEBSITE BELOW.

OR, STOP BY OUR FIRST OFFICIAL OUTPOST IN LEITH - STEWART'S DOCKSIDE TAP - TO PICK UP YOUR BREWERY- FRESH BEER AND MERCH FROM TOWN

WWW.STEWARTBREWING.CO.UK   

# CAMRA Calling

(continued)

## Forthcoming Scotland & N. Ireland Branches (SNIB) Events

### Quarterly Meeting

1pm 24 August

MacGregor's Bar, Inverness

### Quarterly Meeting

1pm 9 November

Aberdeen (Venue TBC)

Please see the SNIB website, [snib.camra.org.uk](http://snib.camra.org.uk) for more details and the latest information.

## 2019 Branch Pubs of the Year

For our annual Pub of the Year awards, pubs are judged on their atmosphere, decor, welcome, service, community focus and the quality of the cask beer.

Congratulations to all the winners!

### City of Edinburgh Pub of the Year

- Joint 1st: **Dreadnought**, North Fort Street
- Joint 1st: **Stockbridge Tap**, Raeburn Place
- 3rd: **Cloisters**, Brougham Place

### Lothians Pub of the Year

- 1st: **Staggs**, Musselburgh
- 2nd: **Dean Tavern**, Newtongrange
- 3rd: **Grey Horse**, Balerno

### Borders Pub of the Year

- 1st: **Bridge Inn**, Peebles (also **Overall Winner**)
- 2nd: **Rutherfords**, Kelso
- 3rd: **Plough Inn**, Leitholm

### Cider Pub of the Year

- 1st: **Jolly Judge**, Lawnmarket
- 2nd: **Blacksmith's Forge**, Dalkeith
- 3rd: **Staggs**, Musselburgh





### Real Ale Quality Award 2018

At the November 2018 branch meeting, the beer scores received from members since the previous February were used to select the winners of the Real Ale Quality award.

The winners were:

- **Edinburgh: Cask & Barrel (Southside)**
- **Lothians: Ducks Inn, Aberlady**
- **Borders: Plough Inn, Leitholm (also Overall Winner)**

# The Volunteer Arms

17 Victoria Street, Dunbar  
Tel: 01368 862278



Our cosy pub nestles down by the harbour. An eclectic mix of Cask Ales served on two handpulls - see board for what's coming! There is an outside seating area, just what you need in Sunny Dinnie!



# The Volunteer Arms

Meals are served from 12-9pm,  
Daily Specials Board available.


Restaurant upstairs

Available for bookings & small functions

## CASK & BARREL SOUTHSIDE

**CAMRA PUB OF THE YEAR  
2012 & 2014**




24-26 West Preston Street, Edinburgh, EH8 9PZ  
southside@caskandbarrelbars.co.uk  
0131 667 0856  
 Find us on Facebook!



## ROSEBURN BAR

A traditional bar in the heart of Edinburgh,  
situated close to both Murrayfield &  
Tynecastle stadiums



FIND US  
ON FACEBOOK!



1 Roseburn Terrace, Edinburgh, EH12 5NG  
www.roseburnbar.co.uk  
info@roseburnbar.co.uk | 0131 337 1067

# City Ale Tales

## Pub News

Welcome to two new Edinburgh real ale outlets: **Froth and Flame** in Morrison St (opened in May) and **Born in the Borders** in the Waverley Mall (December). Both venues offer three cask ales and, because of their brewery connections, are also featured in 'News of the Brews' in this issue. Another brewery setting up an Edinburgh bar is Fierce Beer from Aberdeen. They have taken over the former real ale outlet **1780** on Rose St, which should be open as a Fierce bar when you read this. Their inaugural bar in Aberdeen, which has been open for about 14 months, carries an excellent selection of Fierce and other beers, but sadly no real ale.



Bucking the trend, **St Andrews Brewing Co Potterrow** has been put on the market by the eponymous brewery. They are also selling the **Outhouse** off Broughton St and wish to concentrate on their bars in St Andrews and Dundee.

Former bank premises are in demand: the former bank site at Holy Corner, between Bruntsfield and Morningside, is being transformed by Signature Pubs into a bar and restaurant in a £4 million project. This is due to open in late 2019. Signature had already spent a similar sum on **Cold Town House** in the Grassmarket. A former bank on Forrest Road is the subject of a planning application for a restaurant and bar by yet another brewing company, Edinburgh Beer Factory. In other late news JD Wetherspoon has succeeded in winning licence approval for a new pub in a former bingo hall site on Southside.

Other pub companies are also in the news, with well-publicised investment plans by Star Pubs and Bars making the headlines. **Damm 27** has recently opened on the site of the former **Victoria Bar** on Causewayside but despite the plush and comfortable interior the opportunity has been missed to establish real ale. It's the same story with Belhaven's **Scottish Engineer** (formerly the **Telford Arms**) – a luxury product with no cask ale.

Bruce Pubs PLC, which owns and/or operates 19 bars in Edinburgh and Fife, has been admitted to the bond market

and is looking to raise up to £20 million to expand its portfolio. They provided a counter-example to the Star and Belhaven cases quoted above when they opened the grand **George IV Bar** a year or two ago complete with three real ales, which are still featured.

Amber Inns is another pubco aiming to expand in Scotland. It currently has 120 pubs in Northern England and Wales and is said to be progressing with plans to open five pubs in Scotland. Details of locations have not yet been released.

In other news:

The **Booking Office**, **Standing Order** and **Playfair** all achieved Best Bar None (Edinburgh) 2018 Gold Awards. Four other local Wetherspoon pubs picked up Silver Awards.

In the 2019 Scotland-wide Best Bar None Awards the **Black Rose Tavern** on Rose St won awards for 'Innovation in Social Responsibility' and 'Best Independent Pub'. It sells a house beer, Black Rose Ale, on handpump.

As part of a *Tryanuary* initiative, local breweries teamed up with Edinburgh pubs to brew special Tryanuary Beers, which were launched all on one day at the participating pubs: **Steel Coulson**, **Diggers**, **Hanging Bat**, **Jolly Judge**, **Blue Blazer** and **Salt Horse**. **St Andrews Brew Co Potterrow** also put on the whole range of beers to round off the day.

Steve Whiting, owner of the **Halfway House**, is involved with the setting up of a new community-owned pub in Glenfarg (claimed to be the first in Scotland) through his Chairmanship of the Glenfarg Community Company.

The **Scotsman's Lounge** has been nicely refurbished (another Star Pubs and Bars upgrade) and has retained real ale (Caledonian Deuchars IPA or Edinburgh Castle).

The **Bow Bar** held the latest of its Winter Beer Festivals in January/February, featuring over 30 cask ales from Scotland and England, and was recently named Best Bar for the second year in a row at the Scottish Hospitality Awards.

Greene King's **Westgate Farm** pub at South Gyle is to benefit from having a Travelodge hotel built next to it. This is due to open in autumn 2019.

The **Spylaw Tavern** in Colinton has had a substantial refit and and reopened in May with three real ales. In the meantime locals have been enjoying a selection of real ales round the corner at the **Colinton Inn**.

The **Old Chain Pier** in Trinity now offers a discount to CAMRA members of 5% on real ales and 10% if ordering food at the same time. Callum Mackay, who also owns the **Malt and Hops** in Leith, hopes to increase the cask ale range from four to six beers.

'Save Leith Walk' campaigners scored a massive victory at the end of January when the plans by Drum Property Group to demolish and redevelop the red sandstone block at 106-162 Leith Walk were thrown out by the Council. However, **Leith Depot** and other tenants are still under threat of eviction, as Drum aims to empty out the properties later in 2019,



and has also appealed against the Council's planning decision.

**Woodland Creatures** on Leith Walk (formerly a Krafty Brew pub) is now owned by ex-Edinburgh Rugby player Sean Crombie. There are two real ales on handpump, as well as an excellent menu including vegetarian and vegan choices.

We featured **Baobab** in the West End as a new real ale outlet in the last issue, however it has

now closed and is up for sale. The area has suffered badly with real ale losses recently, **Voyage of Buck, Indigo Yard, Refinery** and **Au Bar** (now called **AUBAR**) having removed their handpumps. Other real ale losses in Edinburgh have included the **Granary, Tron, Compass** and **Jaffle Joint**. The former **Braidburn Inn** has now been demolished, pending redevelopment. The site of the **Radical Road** pub has been completely cleared and has been sold. This reflects the fact that it was scandalously demolished under a building warrant, without any planning permission.

Finishing with some better news, a number of notable Edinburgh real ale pubs have recently received sympathetic refurbishments. The **Stockbridge Tap, Raeburn, Café Royal, Sheep Heid, Conan Doyle** and **Queens Arms**, to name but six. That would make an excellent pub crawl – perhaps a reader would like to write it up for the next *Pints ofView*?

### THE DOO'COT – Apologies and corrections

In the 'City Ale Tales' article in PoV 72 we featured the newly-reopened **Doo'cot** pub in North Edinburgh. Following representations from, and discussions with, Robert Pearson (co-owner) we are happy to publish the following:

1. The pub is not, as suggested, in Drylaw. It's on Ferry Road and is sited between a number of areas, of which Drylaw is one.
2. The has not been any issue about Sam Smith's refusing to send cask ale to the Doo'cot, because the pub has no intention of selling any. This is due to a perceived lack of demand.
3. We apologise that the interior photo of the Doo'cot that was published included a recognisable image of a customer sitting at the bar without requesting permission from that person.

Furthermore we are pleased to report that Robert and his partner Graeme have now taken on and reopened Sam Smith's other Edinburgh pub, the **Cramond Inn**. We wish them good luck with both ventures.

## THE DIGGERS



**6 REAL ALES**  
**VOTED EDINBURGH'S**  
**BEST PUB PIE**  
**DOGS WELCOME**  
**FULL SKY PACKAGE**  
**OVER 340 MALTS**  
**40 MALTS £2.50 FOR 35MLS**  
**OPEN DAILY 11AM UNTIL 1AM**  
**1-3 ANGLE PARK TERRACE**  
**EH11 2JX - 0131 337 3822**  
**FIND US ON FACEBOOK "THEATHLETICARMS"**

## Tiled Paintings in Edinburgh Pubs

### Part 3: Bennets Bar, Tollcross

by Michael Slaughter and Geoff Brandwood

In the first two articles (PoV 71 Summer 2018 & 72 Winter 2018) we described the impressive tiled paintings at the Café Royal which date back to a major refit in 1900–1 and were the work of the famous London firm of Doultons of Lambeth.



Hunter with horn and bow



Woman with spear and basket



Man with whip



Woman with scythe

Another Edinburgh bar with highly distinctive tiling is Bennets Bar on Leven Street, Tollcross, which probably has the best historic interior in Edinburgh after the Café Royal. The particular interest for this article is the tiling in a fine round-arched, colonnaded feature down the right-hand side wall and probably dating from 1906.

There are four bays, each of which has a mirror flanked by tall panels of four and a half tiles. They depict Classical figures and were painted by William B. Simpson & Sons of St Martin's Lane, London. Simpsons were major suppliers of painted tiling to pubs at the very end of the nineteenth century and bought in blanks from tile manufacturers on which they painted their designs. In this case they used biscuit-coloured tiles supplied by the Maw & Co. of Jackfield in Shropshire whose works was then the largest tile factory in the world.

The figures represent a variety of military, agricultural and hunting subjects set against dimly-glimpsed Arcadian landscapes. Above them, in the arched heads are four panels of three tiles each depicting *putti* – near-naked cherubs, popular in Classical art. Beneath each main figure is a tile mask, eight in total but all identical. In the passage between the original bar fronting Leven Street and the second bar are modern paintings copied from some of the arcading work.

But there's more to Bennets than the tiling. There's a fine gantry at the back of the servery which houses four long-defunct spirit casks. Look out too for the tiny 'jug bar' at the front left of the pub. The glasswork is varied and interesting, such as the swirly Art Nouveau windows to the street, and the door panel advertisements offering the delights of Jenkinson's (Leith) beers and Jeffrey's lager. Edinburgh brewers John Jeffrey & Co. were one of the



*Roman soldier(?)  
with shield and  
spear*



*Woman having a  
stretch!*



*Woman with basket  
of fruit*



*Roman soldier with  
spear and eagle  
standard (known as  
an aquila)*

pioneer brewers of lager in Scotland at the end of the Victorian era.

There's a lot more to discover around Edinburgh and Part 4 will feature the eleven tiled paintings of rural (presumably) Scottish scenes at the Barony Bar, Broughton Street in the New Town.

If any reader is aware of other tiled paintings, then we would be delighted to hear from you with details, please contact [poveditor@edinburghcamra.org.uk](mailto:poveditor@edinburghcamra.org.uk).



*One of the eight tile  
masks*

*All photographs by Michael Slaughter LRPS*

# BREW PUB ERUPTION

by Pat Hanson

When Kentwood Brewing ceased their operations at the **Gothenburg** pub in Prestonpans last year, the number of brewpubs in our CAMRA Branch area again reverted to just one, being the tiny and now long-standing Sabco kit at the **Hanging Bat** on Lothian Road, Edinburgh. Most of the beer produced here is kegged, but occasional top quality cask specials have appeared at the Bat.

However, suddenly there are four! As featured on other pages in 'News of the Brews', Faking Bad Brewery has happily restarted the production of real ale at the **Goth**. Next in line was Signature Pubs' first-floor Brewhouse at the impressive new **Cold Town House** in Edinburgh's Grassmarket. Four or more beers are produced for sale on site, with the Chocolate Cake Stout and Gingerbread Brown Ale being a couple of the standouts. A recent CAMRA beer-tasting trip heard evidence of low carbonation, minimal filtering and lack of pasteurisation, although there will be ongoing contact with the ex-Drygate brewer to see whether the resultant beverages can be considered as real ales!



The Hanging Bat microbrewery

Another first-floor brewkit has been installed at **Apothecary**, located at Edinburgh's Quatermile development on the site of the former **8 Lister Square** pub. Brewing of EiDYN beers on site was expected to start in June, mostly for tank or keg, although the brewers do not rule out cask. Several EiDYN beers brewed under contract elsewhere have already been on sale for some time at Apothecary.

# THE FERRY TAP



TRADITIONAL CASK ALES  
WIDE RANGE OF SINGLE MALTS  
TRADITIONAL HOME COOKING



36 High Street, South Queensferry, EH30 9HN  
[www.ferrytap.co.uk](http://www.ferrytap.co.uk)  
0131 331 2000 | [info@ferrytap.co.uk](mailto:info@ferrytap.co.uk)  
find us on Facebook!

Some 'near misses' which are not actually brewpubs include the **Walled Garden** at Dirleton, where there is a doorway from the bar into the separate and much larger Knops brewery, and the **Royal Dick** at Summerhall, located about 10 metres away from Barney's brewery. Then there are the taprooms (or similar) at Stewart's, Cross Borders, Campervan, Born in the Borders, etc which are clearly a different kettle of fish.

Where will the fifth local brewpub turn up?



Cold Town House brewhouse



GREAT BRITISH  
**BEER**  
FESTIVAL  
LONDON 2019

# The live beer experience

Supporting  
your local  
Breweries

**6-10 August • Olympia London**

This year the Great British Beer Festival takes you on a journey from the smallest seed to the perfect pint! Experience the natural magic of grain to glass, while enjoying live music, fabulous food and more...

Book your tickets today

**[gbbf.org.uk](http://gbbf.org.uk)**

**PLUS** Cider & Perry • **NEW** Wine & Gin Bar • Music • Street Food  
**NEW** International Beer Festival • Entertainment • **NEW** Beer Discovery Zone



Campaign  
for  
Real Ale

# BEER AND LOTHIAN

## Pub News

As we go to press, there's concern brewing over Marston's apparent plan to cease most, if not all, cask ale deliveries to its Scottish pubs from mid-May. This policy may also involve removing handpumps from the bars in question, of which the **Pine Marten** in Dunbar and the **Chain Runner** in Livingston are just two (there are around 22 in Scotland). The **Old Colliery** at Danderhall is also likely to be affected, but perhaps not Marston's **Foundry39** in Edinburgh, which is branded differently and already sources its real ale locally (recently from Barney's). CAMRA protested strongly to Marston's senior management and will be looking for other ways of making its points about the preservation of choice, e.g. by retaining handpumps and allowing pubs to feature and promote local breweries.

Also in Dunbar, Ian Minto from the **Sun Inn** Lothianbridge has taken over and refurbished the **Rocks** (now run by his daughter Amy). It has a single real ale (initially Shepherd Neame Spitfire) on a back wall tap, though we have had reports that this is not always on. Down the road in Belhaven the **Brig and Barrel** was opened in May by James Hughes. This is the former **Masons Arms**, near the brewery, and has two real ales, with the potential to increase to as many as six if the demand is there.



The **Ship Inn** in North Berwick has reintroduced a fourth handpump (with the possibility of increasing to five by scrapping a keg fount). Licensee Niall Middleton, who has incidentally now given up his involvement with the **Thistle St Bar** in Edinburgh after 18 years, is looking to expand and promote a new range of real ales, many



sourced through SIBA. Round the corner the **County Hotel** is the subject of ambitious Star Pubs and Bars plans, which will require planning permission. In the meantime a pop-up bar and restaurant called the **Beach Hut** will be filling the space. On the outskirts of North Berwick the **Nether Abbey Hotel** was awarded 'Pub of the Year' at the East and Midlothian Food and Drink awards in April and is busily planning its next annual beer festival, to be held in November.

The **Bonnie Badger** opened as planned in Gullane in December and usually has three real ales on offer from Campervan, Stewart or other local breweries.

Across the hills in Haddington, the **Bell** has now been renamed the **Green**. Kurt Edwards and Laura McSweeney took on this Greene King pub in April and were due to close for a while in May to make a number of changes. Hopefully this will result in the reintroduction of real ale. Greene King is still looking to sell the **Victoria Inn** after a deal with a potential buyer fell through. The former **Waterloo Bistro** is to reopen as the **Tynehouse**, described as a 'restaurant, teahouse and cocktail bar'. Very near by the **Tyneside Tavern** has had plans for a beer garden approved by the Licensing Board and it should be up and running by now.

The **Gothenburg** in Prestonpans not only has the new Faking Bad real ales but has also regularised its previously restricted opening hours. It's now open from 12 noon daily.

The **Walled Garden** at Archerfield, near Dirleton, no longer sells real ale from its back wall taps (if it ever did). The long spouts are usually indicators of real ale, but they are apparently used because of a lack of short ones! The **Thorntree** in Cockenzie also seems to have drawn a line under its on/off relationship with real ale by stopping selling it.

In other East Lothian news the **Brig Inn** in Tranent (no real ale now, but it used to have some and even ran beer festivals) is subject to a planning application for conversion to two flats, with a further nine flats proposed

for erection behind it. Local CAMRA members have lodged objections with East Lothian Council but no decision has yet been reached.

The (fairly) new premises manager at the **Goblin Ha'** in Gifford is Dan Clarke, who is enthusiastic about real ale and also has a Good Beer Guide pub in Herefordshire. Hop Back Summer Lightning, a village favourite that's usually also available at the **Tweeddale Arms**, is being kept on, together with a couple of other real ales.

In West Lothian the **Grapes** in East Calder may be bringing a second handpump into use in Spring/Summer 2019. Deuchars IPA has been the regular real ale so far in this village local, which dates from 1895.

Anyone wishing to take advantage of the newly-electrified Shotts rail route is highly recommended to call at the **Railway**, 10 minutes' walk from West Calder station. There are usually a couple of real ales on offer and you probably get shown round the spacious lounge at the rear.

Completing this review of the Calder, the **Black Bull** is now the only place to get cask ale in Mid Calder because the **Fork and Field** took its handpump out late in 2018. They usually have Deuchars IPA and a couple of guest beers. In addition to the lounge this pub has a fine traditional public bar that opens Friday to Sunday.



The Grapes, East Calder

Work seemed to be proceeding at the closed ex-**Malleny Arms** in Balerno in Oct/Nov 2018 (to become the **Fig and Pheasant**) but it seems unlikely that it will open under new ownership until late 2019 at the earliest. The **Grey Horse** over the road will see CAMRA members toasting 'Cheers to Beer' on Beer Day Britain (15<sup>th</sup> June) during our Branch Social Meeting there. Along the road at Currie, Star Pubs and Bars are promising another massive investment to reopen the **Woodhall Arms** once the right partner is found.

In Midlothian there's been a major development in Penicuik, with the **Craigie** being taken over by the owners of the **Paper Mill** in Lasswade. The Paper Mill has no real ale (except during its annual beer festival!) however, one real ale has been spotted at the Craigie since the takeover, where cask ale was previously sold intermittently. The **Navaar** and **Haig's** are the established real ale outlets in town. Incidentally, the Paper Mill won 'Best Pub and Bar in Midlothian' in the National Pub Awards (April) and went forward to the finals with the **Windsor** (Edinburgh), **Crown and Kitchen** East Linton (East Lothian) and **Four Marys** Linlithgow (West Lothian). Also in Lasswade, the **Laird & Dog** won Scottish Hospitality Pub of the Year 2018 and Best Bar None Midlothian in 2018 and 2019.

The former **Abbey Granary** in Newtongrange is now seeing new life as a Chinese restaurant. The unique **Dean Tavern** provides the local real ale, often from Born in the Borders, and is only about 10 minutes' walk from the station.

**Craig Leith**

Please note: due to space constraints, our Pub News columns sadly cannot mention every real ale pub in the branch area in every issue. If you have some news about your pub you'd like us to share in the next issue, please get in touch (contact details on p2).

For more up-to-date information on all real ales pubs in the branch area and beyond, please see [WhatPub.com](http://WhatPub.com).

**THE NETHER ABBEY**  
North Berwick

East Lothian's Best

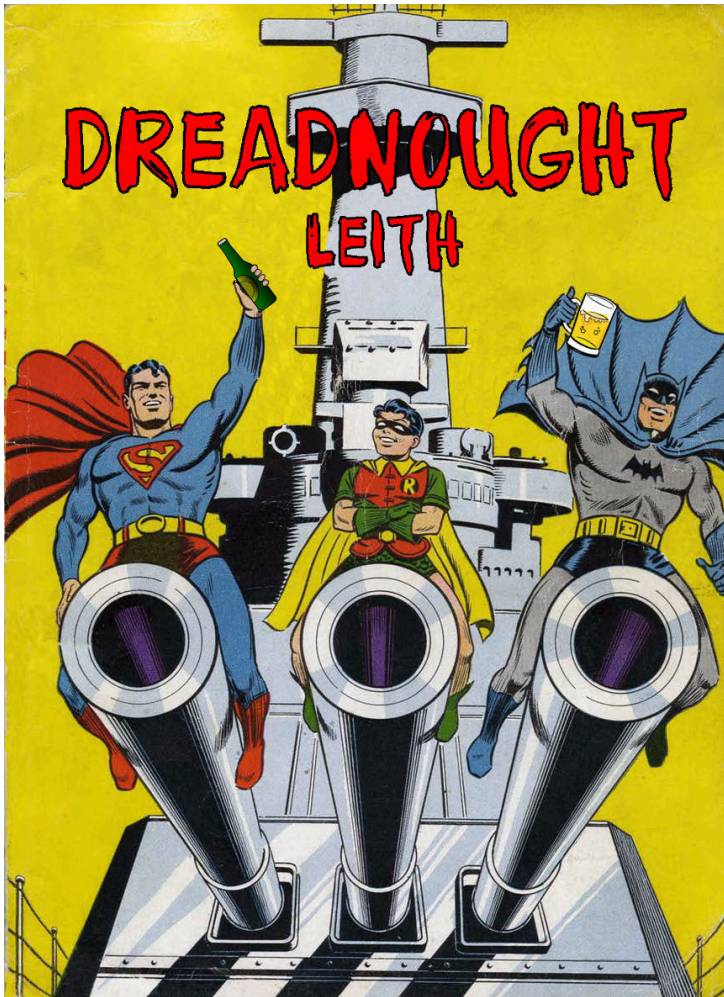
**Beer & Gin**

Established 1992

Festival 2019

Selected Cask & Craft Ales  
Gins  
Gintertainment  
Live Music

**8th - 10th November 2019**

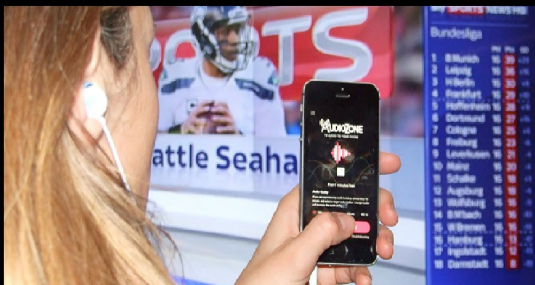


## Cask Ale Superheroes



## CAN'T HEAR THE TELLY?

Install the free AudioZone app to tune into TV audio when pub screens are silent.



### Four Easy Steps

1. Install AudioZone app
2. Connect phone headset
3. Select TV channel
4. Adjust sync if required

*Works anywhere ... Pub, Waiting Room, Airport Lounge, Bookies, Home, Gym...*



www.AUDIOZONE.net



**Landlords : Ensure your customers are aware of this free service with downloadable posters and TV frame stickers available on our website.**

# The Style Council

by Callum Bracher, Branch Tasting Panel Chair

CAMRA is in the process of reviewing its beer style guidelines, used for champion beer competitions and categorisation at beer festivals etc. Currently there are 10 defined styles but since some other organisations recognise many more categories, the question is whether these are still adequate for the current range of real ales available. We will report on any changes once the review is complete, but in the meantime, here's a brief overview of the existing style guidelines.

## **Milds** up to 4% ABV

Black or dark brown but can be lighter. More malty in aroma and taste, less hoppy. Often sweet.

*Includes:* pale milds, dark milds, 60/-

## **Bitters** up to 4% ABV

Brown, tawny, copper or amber but can also be paler. Light to medium malt but with evident hop aroma and taste (earthy, spicy, peppery). Medium to strong bitterness.

## **Best Bitters** 4.1 – 4.6% ABV

Brown, tawny, copper or amber but can also be paler. Light to medium malt but with evident hop aroma and taste (earthy, spicy, peppery). Medium to strong bitterness. Usually medium bodied with more robust malt than lower strength bitters.

## **Strong Bitters** 4.7% ABV or more

Brown, tawny, copper or amber but can also be paler. More pronounced malt than other bitters and assertive hop aroma and taste (earthy, spicy, peppery). Medium to strong bitterness.

*Includes:* English IPAs, American IPAs, Black IPAs

## **Golden Ales** no specific limit on ABV

Amber, gold, yellow, or straw coloured. Powerful citrus-flavoured hop aroma and taste. Little to no malt aroma or taste. Bitterness may be low to strong. Light to medium bodied.

## **Speciality beers** no specific limit on ABV

Real ales produced with novel or alternative ingredients. Includes: Wheat, Rye, or Oat beers; Herb or spice beers; Fruit or vegetable beers; Tree sap beers; use of specialist yeasts, i.e. Brettanomyces (sour beers); Barrel-aged beers; and Lagers.

## **Old ales / Strong milds** 4.1 – 6.4% ABV

Black or dark brown but can be paler. Full bodied with a malty richness. Lack of hop character is implied. Old ales may have fruity flavours, but considerable variation occurs in this style. Strong milds may have more caramel flavour and could have light roast malt character.

## **Porters** no specific limit on ABV

Black or dark brown. A firm roast malt character and pronounced bitter finish. Could have raisin or sultana fruit flavours. Full mouthfeel.

## **Stouts** no specific limit on ABV

Typically black. Dry versions will have roast flavour and distinct dry roast (coffee-like) bitter finish. Some variants have distinct sweetness from use of lactose and may be cloying. Higher alcohol content stouts expect to have more intensity.

*Includes:* Dry stouts, Sweet stouts, Imperial Russian stouts

## **Barley wines / Strong old ales** 6.5% ABV or more

Barley wines are generally amber, copper or tawny whilst strong old ales tend to be dark brown or black. High level of alcohol will be apparent in both. Often a residual sweetness, though some can dry out from longer fermentation. Full bodied and complex. Barley wine may have ripe fruitiness and assertive bitterness. Strong old ales might be richer and maltier with dark fruit, chocolate or roast flavours.

## GOLDEN RULE



COSY PUB SERVING QUALITY CASK ALES  
WIDE RANGE OF SINGLE MALTS  
LIVE SPORT



30 Yeaman Place, Edinburgh, EH11 1BT  
www.goldenruleedinburgh.co.uk  
info@goldenruleedinburgh.co.uk  
0131 229 3413

 FIND US ON FACEBOOK!

# INN the BORDERS

## Pub News

Congratulations to Justin and Andrea from the **First and Last** at Burnmouth! Shortly after hosting CAMRA for an enjoyable Branch Social Meeting they opened up their second venture, with the **Ship Inn** (Eyemouth) returning to the real ale fold after many years. The pub (with restaurant area) is right by the harbour side and has two handpumps; expect to find Cheviot and Born in the Borders beers amongst others.

There's significant but mixed news from JD Wetherspoon's Borders pubs. The **Cross Keys** in Peebles and the **Bourtree** in Hawick have been put up for sale, together with 14 other Wetherspoon pubs. However, the **Hunters Hall** in Galashiels is seeing an £812k investment and expansion into the adjacent former butcher's shop. It's due to reopen in June after several weeks' closure. A petition has been started in Hawick



The Ship Inn, Eyemouth

seeking a reprieve for the Bourtree. It aims to collect 10,000 signatures.

The **Horse and Hound** at Bonchester Bridge, near Hawick, has new tenants (Dawn and David) and retains two handpumps, with the beer often from Born in the Borders. Meanwhile in Melrose the **Kings Arms** has finally reopened with a new operator after being swathed in scaffolding for substantial remedial and expansion work by Punch Taverns, costing £500k. The pub still has three handpumps. Next door, the **George and Abbotsford**

A large advertisement for The Bridge pub in Peebles. The background is a photograph of the pub's exterior. On the left is a shield-shaped logo with a bridge and a glass of beer, with the text 'The Bridge Peebles'. To the right is a circular CAMRA logo. Below these are several text boxes: 'Proud to be CAMRA Edinburgh &amp; South-East Scotland Pub of the Year 2019', 'Picturesque Beer Garden', 'Award winning local ales', 'Vast Malt &amp; Craft Gin Selection', and 'Weekly Entertainment'. At the bottom left is a Facebook logo with the text 'Follow us on Facebook for all the latest news and events!'. At the bottom right is the address 'Port Brae, Peebles' and phone number '01721 720589'.

is doing well under its new management team (Graham and Dawn Barrett), with four handpumps in use, usually featuring Fyne Ales Jarl and Belhaven beers. The **Station Hotel** in Melrose, on the other hand, has stopped selling real ale. This is happily a rare occurrence in the Borders.

Kelso continues to offer an excellent range of beers across six real ale pubs, with **1905, Topsy Ghillie** and **Rutherfords** carrying the broadest selection of breweries and beer styles, while **Cobbles** features real ales from Tempest and the **Cross Keys** and **Queens** sell a single real ale. Rutherfords also appeared in a recent list of '41 best craft beer pubs', the **Hanging Bat** in Edinburgh being the only other local entrant. At the Topsy Ghillie, licensee Brian Caithness has transformed a disused coffee shop in the front of the premises into a café/bistro and has been named as a finalist in the 2019 Star Pubs and Bars Awards.

The following Borders real ale pubs achieved 2019 Best Bar None Gold awards: **Buccleuch Arms** (St Boswell's); **Cobbles** and **Queen's Head** (Kelso); **Plough** (Town Yetholm); and **Templehall** (Morebattle). Cobbles was one of only two pubs found to be selling Tempest cask ale in a winter Central Borders tour, the other being the **Golden Bannock** in Lauder.



Beer Festival at the Plough Inn, Leitholm

The **Plough Inn** in Leitholm kicked off the 2019 Borders beer festival season in style in late March, with 14 real ales on gravity in a rather chilly marquee, as well as four ciders. The standout beers included Heritage Offiler, Magpie Chocolate Raven Stout and Bear Claw Amber. The **Craw Inn**, Auchencrow, held its latest beer festival in May, to be followed by the Coldstream Beer Festival (1<sup>st</sup> June) and the traditional Fathers' Day weekend beer festival at the **Allanton Inn** (14<sup>th</sup> to 16<sup>th</sup> June).

**Grant S House**

# STAGGS BAR

## MUSSELBURGH

Officially The Volunteer Arms,  
run by the same family since 1858



CAMRA SCOTLAND & N.I. PUB OF THE YEAR 2018  
CAMRA NATIONAL PUB OF THE YEAR FINALIST 2018  
CAMRA LOTHIANS PUB OF THE YEAR 2019  
Proud sponsors of The Edinburgh Monarchs Speedway



[www.staggsbar.com](http://www.staggsbar.com)

81 North High Street Musselburgh EH21 6JE



# THE PLOUGH INN



Main Street, Leitholm, Nr Coldstream, TD12 4JN  
01890 840408 [www.theploughinnleitholm.co.uk](http://www.theploughinnleitholm.co.uk)

Good Pub Food, Traditional Sunday Lunch,  
Family & Dog Friendly, Quality Real Ales,  
Beer Garden, Pétanque Piste,  
En-suite Bedrooms

### Pub Opening Hours

Wednesday	5.30-10pm
Thursday	12-3pm & 5.30-10pm
Friday-Saturday	12-3pm & 5.30-11pm
Sunday	12-10pm

Discount on cask ales for CAMRA members

# GREAT RANGE OF QUALITY REAL ALES AVAILABLE

*Featuring great ales such as*

Real-ale  
and cider  
festival  
9-20  
OCTOBER



## wetherspoon

### THE PLAYFAIR

Omni Centre, Leith Walk  
Edinburgh, EH1 3AJ  
Tel: 0131 524 7760

### THE FOOT OF THE WALK

183 Constitution Street, Leith  
Edinburgh, EH6 7AA  
Tel: 0131 553 0120

### THE WHITE LADY

98 St John's Road, Corstorphine  
Edinburgh, EH12 8AT  
Tel: 0131 314 0680

### THE CALEY PICTURE HOUSE

31 Lothian Road  
Edinburgh, EH1 2DJ  
Tel: 0131 656 0752

### THE BOOKING OFFICE

IN THE GOOD BEER GUIDE 2019  
17 Waverley Bridge  
Edinburgh, EH1 1BQ  
Tel: 0131 558 1003

### THE BLACKSMITH'S FORGE

IN THE GOOD BEER GUIDE 2019  
5 Newmills Road, Dalkeith  
Midlothian, EH22 1DU  
Tel: 0131 561 5100

### THE STANDING ORDER

62-66 George Street  
Edinburgh, EH2 2LR  
Tel: 0131 225 4460

### THE ALEXANDER GRAHAM BELL

128 George Street  
Edinburgh, EH2 4JZ  
Tel: 0131 240 8220

### THE NEWYEARFIELD

Unit 1, Livingston Designer Outlet  
Almondvale Avenue  
Livingston, EH54 6QX  
Tel: 01506 420770

### THE DAVID MACBETH MOIR

IN THE GOOD BEER GUIDE 2019  
Bridge Street, Musselburgh  
East Lothian, EH21 6AG  
Tel: 0131 653 1060

 **Table service?**  
Download. Order. Enjoy.

 Download on the  
App Store

 GET IT ON  
Google Play

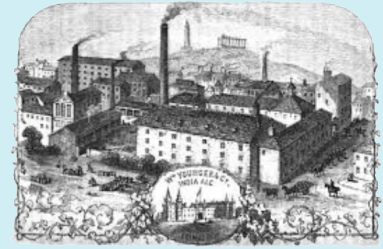
 FREE  
Wi-Fi

**40** wetherspoon  
YEARS  
1979-2019

for the facts  
[drinkaware.co.uk](http://drinkaware.co.uk)

[jdwetherspoon.com](http://jdwetherspoon.com)

Subject to local licensing restrictions and availability at participating free houses. Photography is for guidance only. J D Wetherspoon plc reserves the right to withdraw/change offers (without notice), at any time. See main menu for additional details of our terms and conditions.

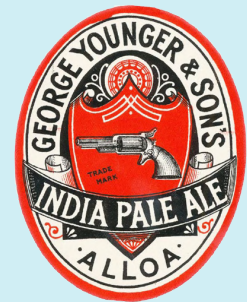


The **Scottish Brewing Archive (SBA)** was established in the early 1980s by Heriot-Watt University's Brewing Department with financial support from the brewing industry to begin with.

Key players were Professor Anna Macleod and Geoff Palmer (now Sir Geoff). Today Sir Geoff continues to give talks, write papers and books putting his knowledge, experience, energy and charisma at the service of brewing history and social issues. The SBA was officially opened by Sir William McEwan-Younger Bt. in 1982, coinciding with its first exhibition.

In 1991 the Archive was transferred to the University of Glasgow Archive Services where environmentally controlled facilities were available. The SBA now has an excellent reading room readily accessed by public transport for visiting (by prior appointment) for research or study. It is also very convenient for the award-winning real ale pub The Three Judges!

The **Scottish Brewing Archive Association (SBAA)** was formed in 2008 to support and promote the SBA by voluntary efforts from SBAA members. SBAA's main aim is to promote Scottish brewing history in the following ways:



**Community:** Bringing people with a passion for Scottish brewing together, both online and at events throughout the year.



**Storytelling:** Sharing the story of Scotland's brewing heritage through talks, tours and research.



**Tomorrow's History:** Engaging with today's brewers to record their stories for future generations.

## SBAA MEMBERSHIP GIVES YOU:

- Free and discounted event attendance
- Social and networking opportunities
- Guidance and advice on the archive and brewing history
- Regular newsletters
- The annual SBAA Journal
- Member Directory and Corporate Gallery
- Create value for future generations and your brand
- Access to funded projects

We want to be more proactive in working with **CAMRA** members to document Scotland's brewing history as it happens. What happens today becomes history tomorrow.

An unprecedented number of breweries are springing up in Scotland and it is imperative that their stories are preserved for the future.

**PLEASE JOIN US AND MAKE IT AN EVEN BETTER JOURNEY!**

[www.scottishbrewingarchive.co.uk](http://www.scottishbrewingarchive.co.uk) E: [info@scottishbrewingarchive.co.uk](mailto:info@scottishbrewingarchive.co.uk)

# NEWS OF THE BREWS

## Brewery Update

### Alechemy Brewing

Alechemy is now part of Consolidated Craft Breweries, together with Keith Brewery and Spey Valley Brewery. The team behind Keith acquired funding from the Discovery Investment Fund, enabling them to bring the other brewers, plus the Firkin Express drinks distributors, into the new grouping late in 2018.

Other plans include the opening of a pub on Morrison St, Edinburgh, in May. The **Froth and Flame**, formerly the **Foxy Fiddler**, sells the group's beers on cask and also has a number of keg taps.

### Belhaven Brewery

Belhaven's updated visitor centre is expected to open later in the summer after a £500k investment. Look out for news about an early CAMRA Branch visit to the new facility. A 'limited edition' 4.5% abv pale ale called 1719, brewed to commemorate Belhaven's 300<sup>th</sup> anniversary, has been widely available in Belhaven and Greene King pubs.

### Bellfield Brewery

Lawless Village IPA (cask) has continued to appear regularly in pubs across Edinburgh and Central Scotland. Bellfield is planning to open a visitor centre and taproom in the summer at its Abbeyhill brewery as part of an ambitious expansion plan.

### Born in the Borders Brewery

The brewery's latest projects have included a new shop and bistro/bar in Edinburgh's Waverley Mall selling three Born in the Borders real ales and Tempest keg beer as well as showcasing Borders food and drink more generally.

The core beer range has once again been supplemented by seasonal ales and a brand new ale, New Millennium (4% abv) was launched in April to celebrate the 100<sup>th</sup> brew.

A new innovation at the Lanton Mill visitor centre sees a Brew School for beginners on the first weekend of every

**CAMRA**  
CAMPAIGN FOR REAL ALE

# WHAT?UB

**whatpub.com**  
Featuring over 35,000 real ale pubs

- Over 96% of Britain's real ale pubs featured
- Information updated by thousands of CAMRA volunteers
- Created by CAMRA who produce the UK's best beer & pub guide

Thousands of pubs at your fingertips!



month. This is a tutored day (10am to 4pm) for up to six people and goes through the whole brewing process with tastings throughout the day as well as coffee and scones!

### Campervan Brewery

A successful crowdfunding exercise late in 2018 will help to fund expansion of the Leith taproom, making it more accessible and a better community asset. Occasional cask ales have been on offer at the taproom along with the usual wide range of keg beers,

and a handpump has been installed.

### Cold Town Beer

The longer life kegged Lager and Pale Ale are still brewed at the Dunedin St site, with short-run more specialist beers taking centre stage at the new **Cold Town House** brewpub (see feature on page 10).

### Cross Borders Brewing Co.

A new 6% abv India Pale Ale was launched at **Cloisters** in March.

**EiDYN**

This is the name for the range of beers to be brewed at the **Apothecary** brewpub in Quartermile, Edinburgh (see feature on page 10). Early versions were contract-brewed elsewhere.

**Elixir Brew Co.**

Elixir has come out of the shadows to brew their annual ANZAC beer in collaboration with the **Bow Bar** and Fallen Brewing. It was launched on ANZAC Day, April 25<sup>th</sup>, at the Bow Bar.

**Faking Bad Brewery**

This new brewery, set up by Preston Lodge High School teachers Gareth Evans and Gordon Kidd, took over the brewhouse at the **Gothenburg** in Prestonpans. The first beers were launched at the Goth in March – Atomic IPA (4% abv) and Dark Matter (3.2%). Later in May, Electron Ale (4.8%) was added to the range, and Atomic IPA was upgraded to 5.1%. Gareth and Gordon will be continuing with their teaching careers while the commercial brewing venture develops.

**Ferry Brewery**

Ferry are again holding their annual FerryFest beer festival at their brewery on June 29<sup>th</sup>. See their Facebook page for ticketing information.

**Hurly Burly Brewery**

Head brewer Peter McNaught reports that the process of setting up the new Brewhouse on Inveresk Industrial Estate has been more challenging than anticipated, but that good progress is now being made. The range of bottle-conditioned beers (between 4% and 6.5% abv) remains the same.



Faking Bad brewers, with CAMRA member Kevin Blair.

**Innis and Gunn**

The firm has unveiled plans to ‘come home’ to Edinburgh by building a new brewery, claimed to be the first new ‘large scale’ brewery in Edinburgh for 150 years. The plans for the brewery, which seems likely to concentrate on lager production, are subject to planning approval and will include a taproom and visitor facilities.

In the meantime Innis and Gunn’s **Beer Kitchen** on Lothian Road has itself been refurbished and renamed as the **Brewery Taproom**. The cask ale range has reduced from four to two, although its availability was rather patchy in the first few weeks after reopening. The Brew School mini-brewing facility has been enhanced.

**Pilot Beer**

Pilot produced its last batch of beer on the old ex-McCowan’s kit in Leith in November 2018 and has now moved to the Stewartfield industrial estate in Bonnington. There are still no plans to return to cask ale production.

**Stewart Brewing**

The brewery at Loanhead has a new outdoor covered area to add to the existing taproom, enabling large events, live music, street food etc to be featured.

The annual Mayfest was held on 10<sup>th</sup>/11<sup>th</sup> May, with over 35 different beers, including Jack Back, Radical Road Reverse, 80/- and collaboration ales on cask. Collaborators included Top Out, Cross Borders, Fyne Ales and Brisbane Brewery from Australia!

Cask specials in early 2019 have included Cross the Line (4.1% abv ‘rugby’ bitter) and the return of Cascade red ale. Coming soon will be Kilted Kiwi (3.9% NZ hopped pale) and Celtman (5% American style pale). The most recent Project 7 beers on keg have included Aqualung and Hornindal.



www.oldbelledinburgh.co.uk



QUALITY CASK ALES | LIVE SPORT | GREAT FOOD

233 - 235 Causewayside, Edinburgh, EH9 1PH





FIND US ON FACEBOOK!



0131 668 1573 | info@oldbelledinburgh.co.uk



# NEWS OF THE BREWS

(continued)



Craig Scotland of Stewarts receives the 2018 Champion Beer of Scotland Real Ale in a Bottle (Light) award for Radical Road.

Stewart Brewing has again been winning awards, including Gold, Silver and Bronze at the regional SIBA Scotland awards. The company also won 'Local Producer of the Year' in the recent 2019 East and Midlothian Food and Drink Awards.

## Tempest Brewing Co.

Following another successful Springfest held at the brewery, Tempest continues to expand, experiment and evolve. Currently they are developing a new rotational concept for their cask range that will focus on the IPA style, varying the yeast, malt or hops. While several craft keg beers are produced, Tempest is also committed to its core cask range that includes Pale Armadillo, Vermont Sessions, Session Pale and Elemental Porter.

The brewery is looking to expand into custom-built facilities, while remaining in Tweedbank. Plans for this are progressing with the Eildon Mill buildings (opposite the Borders Railway terminus) now fully demolished.

Tempest are also delighted to



Some of the Top Out core range: Smoked Porter, Simon Says-On, Copperheid and The Cone.

have been voted one of the world's top 100 breweries in the 2018 RateBeer awards and will be out to impress again at the forthcoming annual Oktoberfest (usually held in September!).

## Thistly Cross Cider

There have been significant business developments involving Edinburgh Beer Factory. EBF issued the following statement to PoV:

*We can confirm that the Dunsmore family purchased the shares in Thistly Cross previously owned by the Rennie family at the end of January.*

*Lynne and John Dunsmore are the owners of Edinburgh Beer Factory, and also have investments in Scotch Malt Whisky Society, Chapel Down Wine and Genius Foods.*

*Peter Stuart, the founder and Head Cidermaker at Thistly Cross, remains the largest single shareholder and the company will continue to be run independently, but Thistly Cross and Edinburgh Beer Factory will work cooperatively together, where appropriate.*

News from Thistly Cross about the future of its cidermaking, particularly Jaggy Thistle 'real' cider, is awaited. The site at West Barns also hosts Eyeball Brewing, who have not yet clarified what the future holds.

## Top Out Brewery

The single hop Pale Ale is proving popular. A different hop variety is used each batch; some of the recent ones include Mandarina Bavaria, Centennial, Eureka, Styrian Wolf and Hallertau Blanc. Staple and Altbier are also popular in cask, and Smoked Porter sold well over the Winter months.

The core range continues unchanged, but the First Ascents range has been added to in the past few months. This is a range of special, one-off and limited brews and so far has included Plum Sour 3.9%, Black Forest Gateau Stout 5.7%, Brut IPA 6%, with the most recent release Yucatan Honey Wheat Wine 10.2%.

In the coming months further beers in the First Ascents range and a new beer in the core range are expected.

## Vault City

Although most of Johnny Horn's beers are kegged, a cask Imperial Stout appeared at the Hanging Bat at the turn of the year and was well-received.

# Join up, join in, join the campaign



**CAMPAIGN  
FOR  
REAL ALE**

From  
as little as  
**£25<sup>+</sup>**  
a year. That's less  
than a pint a  
month!



Protect the traditions of great British pubs and everything that goes with them by joining today at [www.camra.org.uk/joinup](http://www.camra.org.uk/joinup)

Or enter your details and complete the Direct Debit form below and you will receive 15 months membership for the price of 12 and save £2 on your membership subscription

Alternatively you can send a cheque payable to CAMRA Ltd with your completed form, visit [www.camra.org.uk/joinus](http://www.camra.org.uk/joinus), or call **01727 798440**. \* All forms should be addressed to Membership Department, CAMRA, 230 Hatfield Road, St Albans, AL1 4LW.

### Your details:

Title ..... Surname .....  
 Forename(s) .....  
 Date of Birth (dd/mm/yyyy) .....  
 Address .....  
 .....  
 ..... Postcode .....  
 Email address .....  
 Daytime Tel .....

### Direct Debit

	Direct Debit	Non DD
Single Membership (UK)	£25 <input type="checkbox"/>	£27 <input type="checkbox"/>
Joint Membership (Partner at the same address)	£30 <input type="checkbox"/>	£32 <input type="checkbox"/>

For concessionary rates please visit [www.camra.org.uk](http://www.camra.org.uk) or call **01727 798440**.

I wish to join the Campaign for Real Ale, and agree to abide by the Memorandum and Articles of Association which can be found on our website.

### Partner's Details (if Joint Membership)

Title ..... Surname .....  
 Forename(s) .....  
 Date of Birth (dd/mm/yyyy) .....

Signed .....

Date .....

Applications will be processed within 21 days.

 CAMPAIGN FOR REAL ALE	<b>Instruction to your Bank or Building Society to pay by Direct Debit</b> Please fill in the whole form using a ball point pen and send to: <b>Campaign for Real Ale Ltd. 230 Hatfield Road St. Albans, Herts AL1 4LW</b>		 This Guarantee should be detached and retained by the payer.
<b>Name and full postal address of your Bank or Building Society</b>		<b>Service User Number</b> <div style="border: 1px solid black; padding: 2px; display: inline-block;"> <b>9 2 6 1 2 9</b> </div>	
To the Manager ..... Bank or Building Society Address ..... Postcode .....		<b>FOR CAMRA OFFICIAL USE ONLY</b> This is not part of the instruction to your Bank or Building Society Membership Number ..... Name ..... Postcode .....	
<b>Name(s) of Account Holder</b> .....		<b>Instructions to your Bank or Building Society</b> Please pay Campaign For Real Ale Limited Direct Debits from the account detailed on this instruction subject to the safeguards assured by the Direct Debit Guarantee. I understand that this instruction may remain with Campaign For Real Ale Limited and, if so, will be passed electronically to my Bank/ Building Society.	
<b>Bank or Building Society Account Number</b> .....		Signature(s) ..... Date .....	
<b>Branch Sort Code</b> .....			
<b>Reference</b> .....			
Banks and Building Societies may not accept Direct Debit Instructions for some types of account.			

- ### The Direct Debit Guarantee
- This Guarantee is offered by all banks and building societies that accept instructions to pay by Direct Debits
  - If there are any changes to the amount, date or frequency of your Direct Debit The Campaign for Real Ale Ltd will notify you 10 working days in advance of your account being debited or as otherwise agreed. If you request The Campaign for Real Ale Ltd to collect a payment, confirmation of the amount and date will be given to you at the time of the request
  - If an error is made in the payment of your Direct Debit by The Campaign for Real Ale Ltd or your bank or building society, you are entitled to a full and immediate refund of the amount paid from your bank or building society
  - If you receive a refund you are not entitled to, you must pay it back when The Campaign Real Ale Ltd asks you to
  - You can cancel a Direct Debit at any time by simply contacting your bank or building society. Written confirmation may be required. Please also notify us.

<sup>†</sup>Price of single membership when paying by Direct Debit. \*Calls from landlines charged at local rates, cost may vary from mobile phones. New Direct Debit members will receive a 12 month supply of vouchers in their first 15 months of membership.

# SCOTIA WELDING & FABRICATION



Micro Brewery equipment from individual components  
to a turnkey application.

All aspects of brewing consultancy if required.

**01578 722 696**

**admin@scotiawelding.co.uk**

**www.scotiawelding.co.uk**